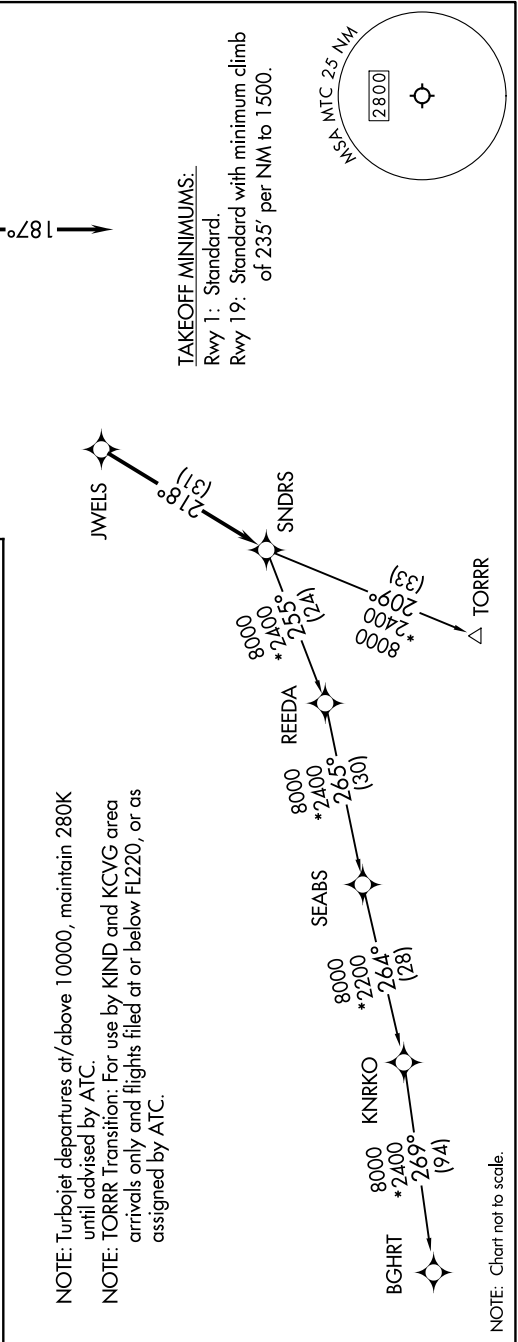


EC-1, 31 OCT 2024 to 28 NOV 2024

<p>DEPARTURE ROUTE DESCRIPTION</p> <p><u>TAKEOFF RUNWAY 1:</u> Climb on heading 007° or as assigned by ATC, thence....</p> <p><u>TAKEOFF RUNWAY 19:</u> Climb on heading 187° or as assigned by ATC, thence....</p> <p>....for RADAR vectors to JWELS, then on track 218° to SNDRS, then on (transition). Maintain ATC assigned altitude, expect filed altitude 10 minutes after departure.</p> <p><u>BGHR T TRANSITION (SNDRS3.BGHR T):</u></p> <p><u>TORR T TRANSITION (SNDRS3.TORR T):</u></p>	<p>TOP ALTITUDE: ASSIGNED BY ATC</p> <p>RNAV-1 DME/DME/IRU or GPS. RADAR required.</p> <p>SELFDRIDGE DEP CON ★ 119.6 391.9 ATIS 125.325 270.1 CLNC DEL 128.3 275.8 GND CON 128.3 275.8 SELFDRIDGE TOWER ★ 120.15 225.4</p>
--	---



EC-1, 31 OCT 2024 to 28 NOV 2024