

MT. CLEMENS, MICHIGAN

# TACAN RWY 19

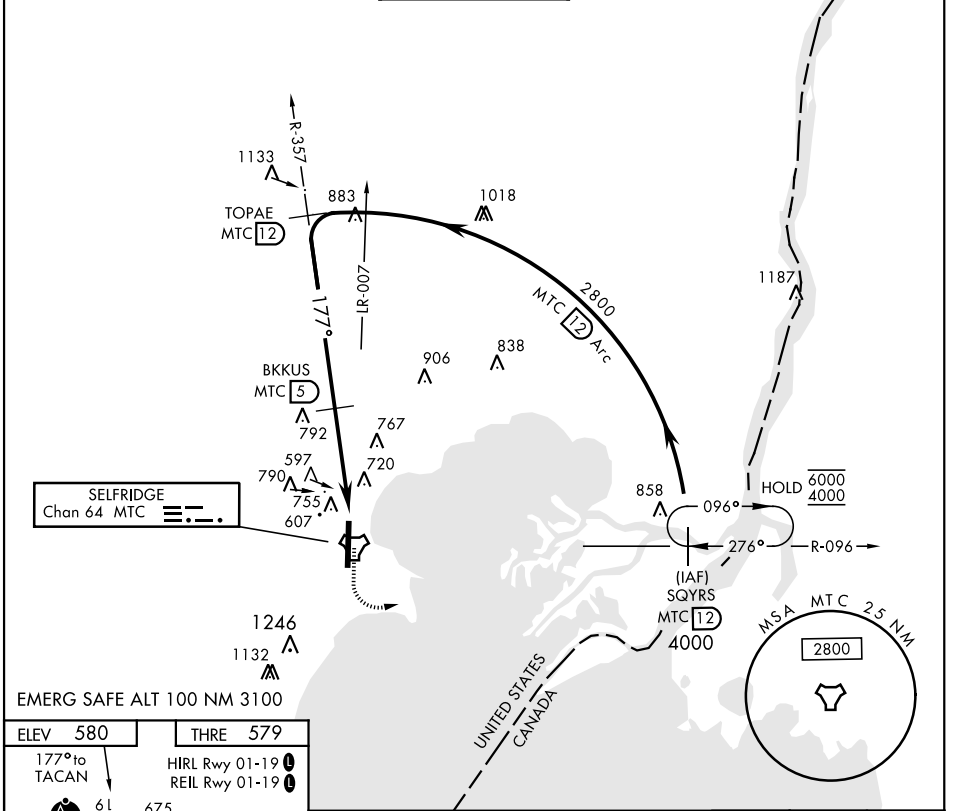
TACAN MTC Chan <b>64</b>	APCH CRS <b>177°</b>	Rwy Idg THRE <b>579</b> Arprt Elev <b>580</b>	AL-276 [USAF]	SELFRIDGE ANGB (KMTC)
-----------------------------	-------------------------	---	---------------	-----------------------

▼ \* When ALS inop, increase CAT AB RVR to 55, vis to 1 mile, CAT CDE vis to 1½ miles.  
 \*\* Circling not authorized W of Rwy 01-19.

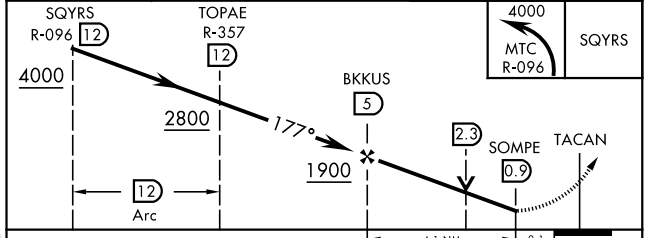
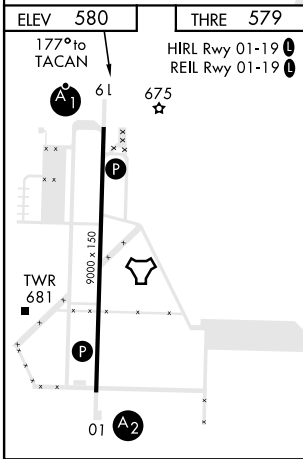
ALSF-1

MISSED APPROACH: Climbing left turn to 4000, intercept MTC R-096 to SQYRS and hold, continue climb-in-hold to 4000.

ATIS <b>125.325 270.1</b>	SELFRIDGE APP CON <b>119.6 318.2</b>	SELFRIDGE TOWER * <b>120.15 (CTAF) 225.4</b>	GND CON <b>128.3 275.8</b>	CLNC DEL <b>128.3 275.8</b>
------------------------------	---	---	-------------------------------	--------------------------------



EMERG SAFE ALT 100 NM 3100



CATEGORY	A	B	C	D	E
S-19 *	1100/40	521 (600-¾)	1100/55	521 (600-1)	
CIRCLING **	1120-1	541 (600-1)	1120-1½ 541 (600-1½)	1140-2	561 (600-2)

MT. CLEMENS, MICHIGAN 42°37'N-82°50'W SELFRIDGE ANGB (KMTC)

Amdt 3 23AUG12

# TACAN RWY 19

EC-1, 31 OCT 2024 to 28 NOV 2024

EC-1, 31 OCT 2024 to 28 NOV 2024