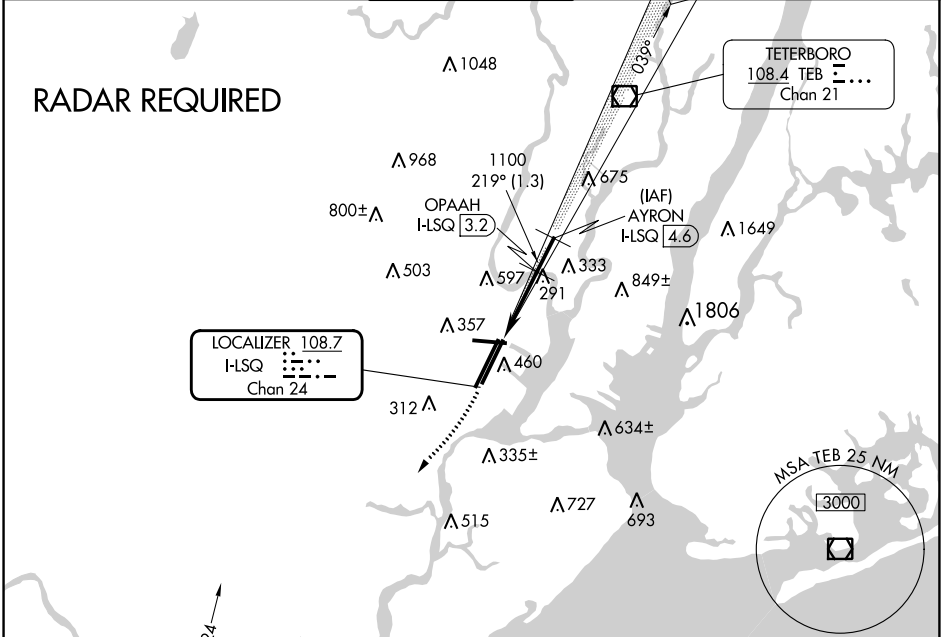


LOC/DME I-LSQ 108.7 Chan 24	APP CRS 219°	Rwy ldg 8207 TDZE 11 Apt Elev 18
---	------------------------	---

COPTER ILS/DME RWY 22L

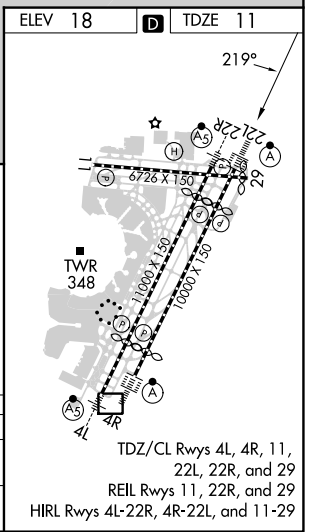
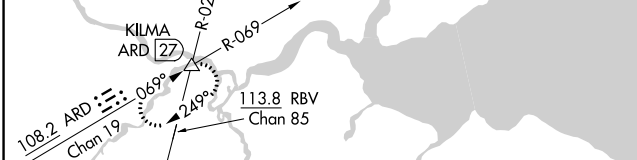
NEWARK LIBERTY INTL (EWR)

ALSF-2 		MISSED APPROACH: Climbing right turn to 2000 heading 225° then climbing right turn to 3000 via ARD R-069 to KILMA INT and hold.			
D-ATIS 115.7 134.825	NEWARK APP CON 128.55 379.9	NEWARK TOWER 118.3 257.6	GND CON 121.8	CLNC DEL 118.85	CPDLC



NE-2, 31 OCT 2024 to 28 NOV 2024

NE-2, 31 OCT 2024 to 28 NOV 2024



2000 hdg 225°	3000 hdg 219°	ARD R-069	KILMA △	VGSI and ILS glidepath not coincident (VGSI Angle 3.00/TCH 60). OPAAH I-LSQ [3.2] AYRON I-LSQ [4.6]
H-LSQ [0.2] H-LSQ [1.7] 1091 219° 1500 1100 GS 3.00° HCH 43				
1.5 NM 1.5 NM 1.3 NM				
CATEGORY	COPTER			
H-ILS 22L	211/12 200 (200-¼)			
H-LOC 22L	560/12 549 (600-¼)			

COPTER ILS/DME RWY 22L