

GBAS CH <b>22727</b> <b>G04A</b>	APP CRS <b>039°</b>	Rwy Idg <b>8460</b> TDZE <b>10</b> Apt Elev <b>17</b>
--	------------------------	---

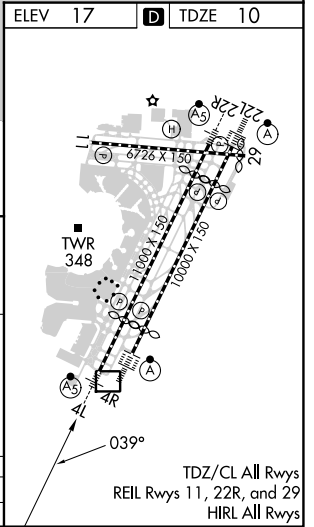
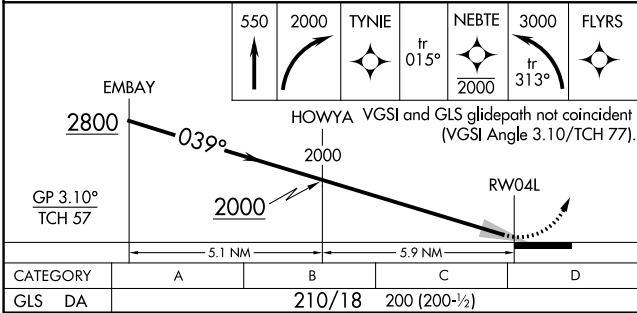
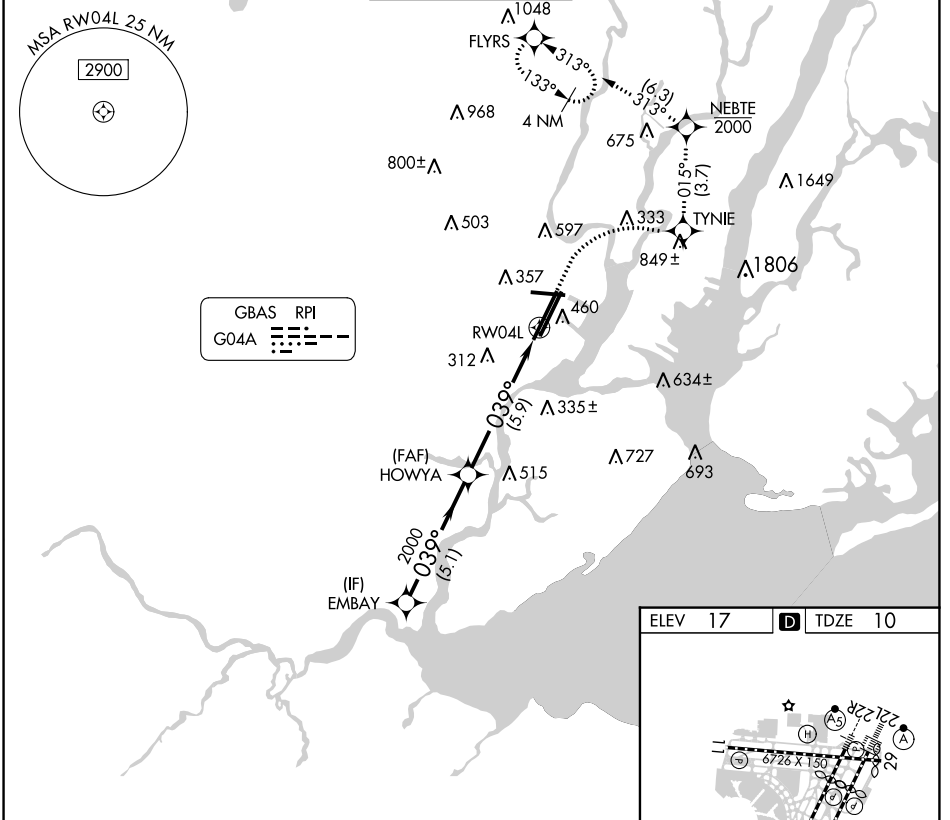
# GLS RWY 4L

NEWARK LIBERTY INTL (EWR)

RNP APCH - GPS.  
RADAR required.  
⚠ NA Autopilot coupled approach NA below 210.

MALSR  
MISSED APPROACH: (Do not exceed 210K until NEBTE) Climb to 550 then climbing right turn to 2000 direct TYNIE and on track 015° to NEBTE, cross NEBTE at or below 2000 then climbing left turn to 3000 on track 313° to FLYRS and hold, continue climb-in-hold to 3000.

D-ATIS <b>115.7 134.825</b>	NEWARK APP CON <b>128.55 379.9</b>	NEWARK TOWER <b>118.3 257.6</b>	GND CON <b>121.8</b>	CLNC DEL <b>118.85</b>	CPDLC
--------------------------------	---------------------------------------	------------------------------------	-------------------------	---------------------------	-------



NE-2, 31 OCT 2024 to 28 NOV 2024

NE-2, 31 OCT 2024 to 28 NOV 2024