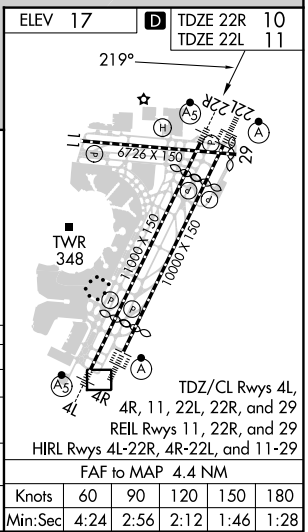
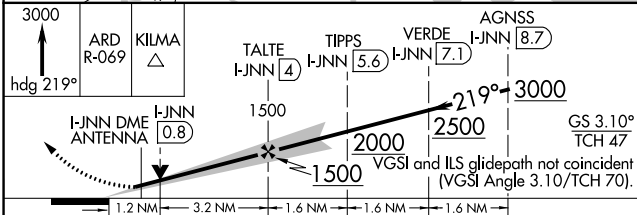
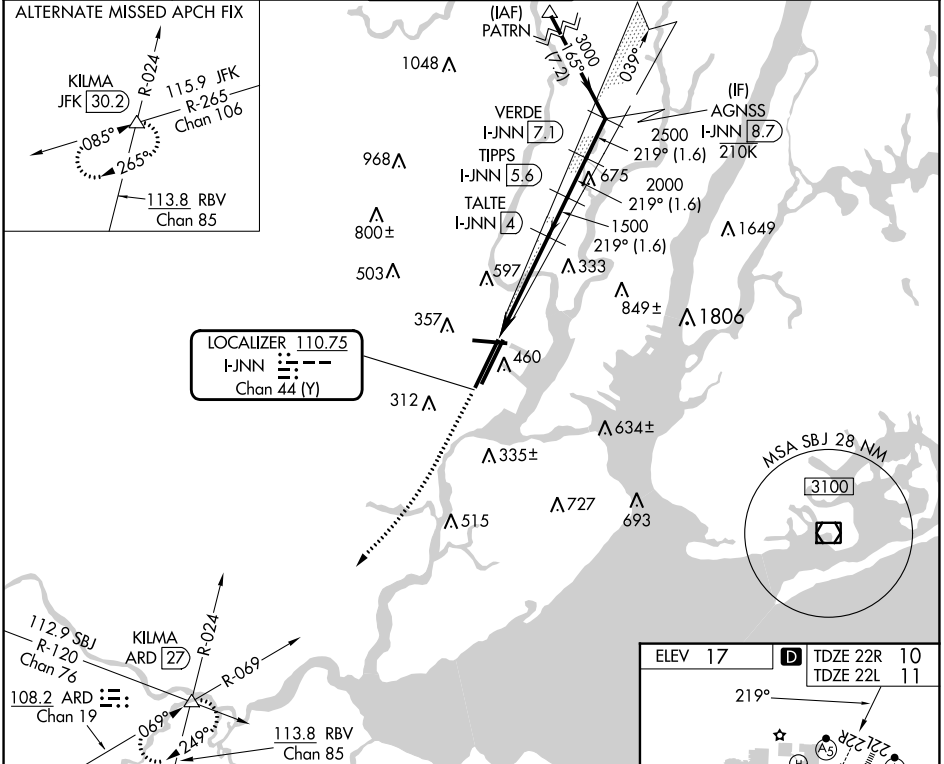


LOC/DME I-JNN 110.75 Chan 44 (Y)	APP CRS 219°	Rwy Idg TDZE Apt Elev	22R 9560 10 17	22L 8207 11 17
---	------------------------	-----------------------------	--	--

ILS or LOC RWY 22R

NEWARK LIBERTY INTL (EWR)

RNP APCH - GPS Aircraft not GPS equipped - RADAR required for procedure entry. DME required.		22R MALSR 	22L ALSF-2 	MISSED APPROACH: Climb to 3000 on heading 219° and ARD VOR/DME R-069 to KILMA INT/ARD 27 DME and hold.	
Circling NA south of Rwy 11-29. When Circling to Rwy 29 at night, operational VGSI required, remain on or above VGSI glidepath until threshold. For inop ALS, increase S-LOC 22R Cat C/D visibility to 1 1/2 SM.		NEWARK TOWER 118.3 257.6		GND CON 121.8	CLNC DEL 118.85
D-ATIS 115.7	NEWARK APP CON 134.825	NEWARK APP CON 128.55 379.9	CPDLC		



NE-2, 31 OCT 2024 to 28 NOV 2024

NE-2, 31 OCT 2024 to 28 NOV 2024