

LOC/DME I-EWR	APP CRS	Rwy Idg	8460
110.75	039°	TDZE	10
Chan 44 (Y)		Apt Elev	17

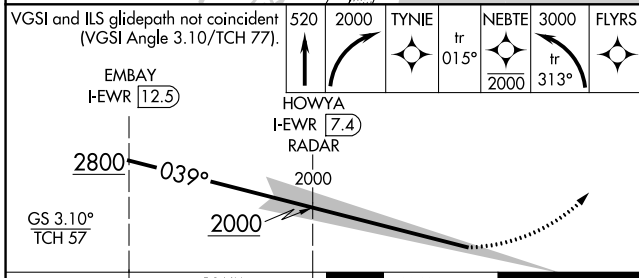
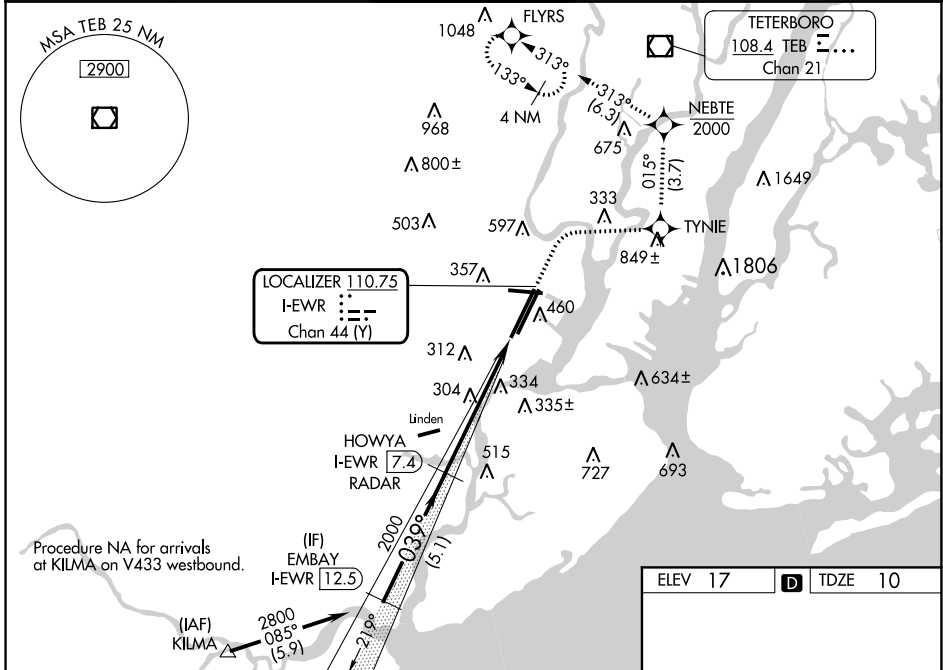
ILS Z RWY 4L (SA CAT I & II)

NEWARK LIBERTY INTL (EWR)

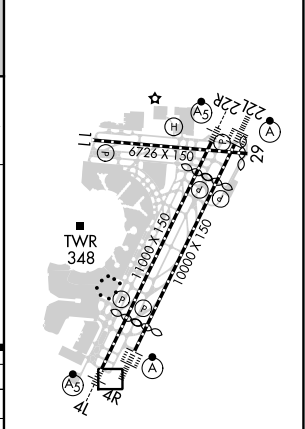
RNP APCH - GPS.
 DME and RADAR required.
 SA CAT I: Requires specific OPSPEC, MSPEC, or LOA approval and use of HUD to DH.
 SA CAT II: Reduced lighting: requires specific OPSPEC, MSPEC, or LOA approval and use of autoland or HUD to touchdown.

MALSRS
 MISSED APPROACH: (Do not exceed 210K until NEBTE) Climb to 520, then climbing right turn to 2000 direct TYNIE and on track 015° to NEBTE, cross NEBTE at or below 2000, then climbing left turn to 3000 on track 313° to FLYRS and hold, continue climb-in-hold to 3000.

D-ATIS	NEWARK APP CON	NEWARK TOWER	GND CON	CLNC DEL	CPDLC
115.7 134.825	128.55 379.9	118.3 257.6	121.8	118.85	



ELEV 17	TDZE 10
---------	---------



CATEGORY	A	B	C	D
S-ILS 4L	SA CAT I	RA 150/14	150	DA 160
S-ILS 4L	SA CAT II	RA 100/12	100	DA 110

SA CATEGORY I & II ILS - SPECIAL AIRCREW & AIRCRAFT CERTIFICATION REQUIRED

TDZ/CL Rwy 4L, 4R, 11, 22L, 22R, and 29
 REIL Rwy 11, 22R, and 29
 HIRL Rwy 4L-22R, 4R-22L, and 11-29

NE-2, 31 OCT 2024 to 28 NOV 2024

NE-2, 31 OCT 2024 to 28 NOV 2024