

VOR/DME IGN <b>117.6</b> Chan <b>123</b>	APP CRS <b>242°</b>	Rwy Idg TDZE Apt Elev <b>164</b>	<b>N/A</b> <b>N/A</b>
--	------------------------	---	--------------------------

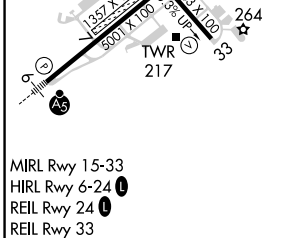
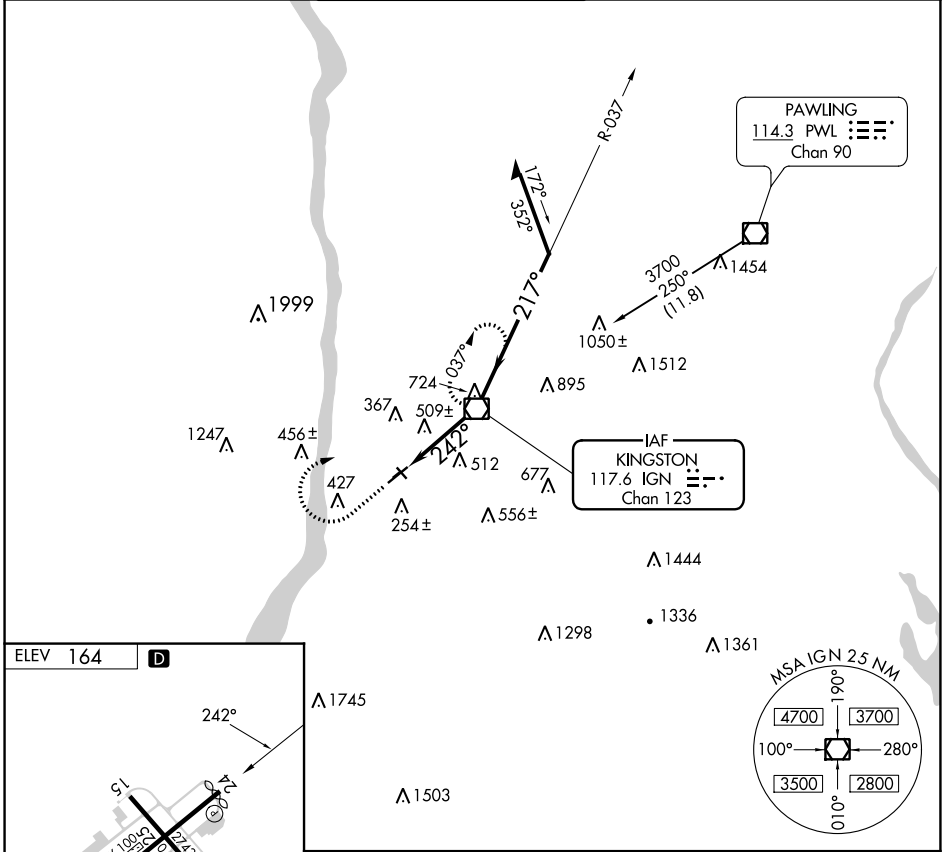
**VOR-A**

HUDSON VALLEY RGNL (POU)

**⚠** Circling NA to Rwys 7 and 25. Circling Rwy 15, 33 NA at night.  
**⚠** Rwy 15, 33 helicopter visibility reduction below 1 SM NA. When local altimeter not received, use Montgomery altimeter setting and increase all MDAs 80 feet and visibility Cat C ¼ SM.

**MISSED APPROACH:** Climb to 1500 then climbing right turn to 3000 direct IGN VOR/DME and hold, continue climb-in-hold to 3000.

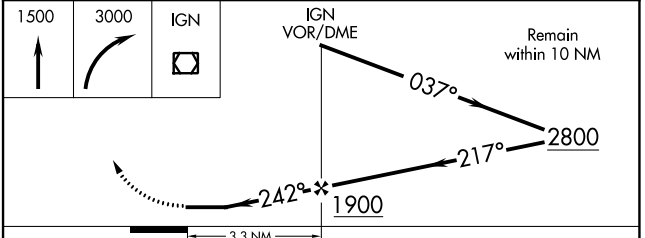
ATIS <b>126.75</b>	NEW YORK APP CON <b>132.75 363.1</b>	DUTCHESS COUNTY TOWER * <b>124.0</b> (CTAF) <b>0 269.15</b>	GND CON <b>121.8</b>	CLNC DEL <b>121.8</b>	UNICOM <b>122.95</b>
-----------------------	---	--	-------------------------	--------------------------	-------------------------



ELEV	164	<b>D</b>
------	-----	----------

MIRL Rwy 15-33	HIRL Rwy 6-24	REIL Rwy 24	REIL Rwy 33
----------------	---------------	-------------	-------------



FAF to MAP 3.3 NM					
Knots	60	90	120	150	180
Min:Sec	3:18	2:12	1:39	1:19	1:06
CATEGORY	A	B	C	D	
CIRCLING	760-1 596 (600-1)	840-1 676 (700-1)	940-2¼ 776 (800-2¼)	1080-3 916 (1000-3)	

**VOR-A**

NE-2, 31 OCT 2024 to 28 NOV 2024

NE-2, 31 OCT 2024 to 28 NOV 2024