

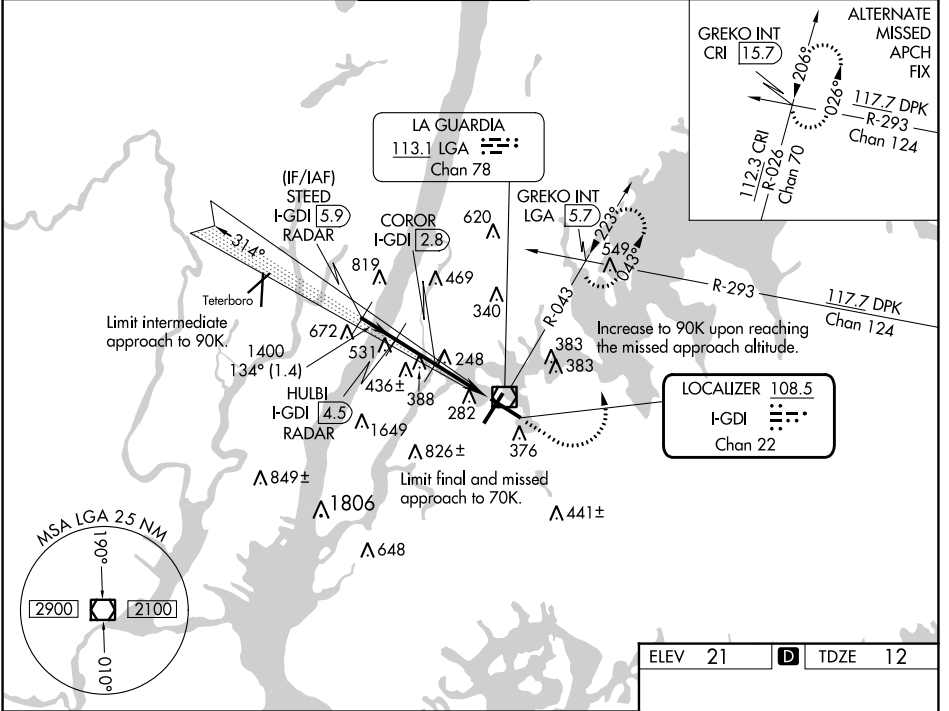
LOC/DME I-GDI <b>108.5</b> Chan 22	APP CRS <b>134°</b>	Rwy Idg TDZE <b>7002</b> <b>12</b> Apt Elev <b>21</b>
--	------------------------	---

# COPTER ILS or LOC RWY 13

LAGUARDIA (LGA)

RADAR required for procedure entry. DME or RADAR required.	MALSR 	MISSED APPROACH: Climb to 800 then climbing left turn to 2000 on LGA VOR/DME R-043 to GREKO INT/LGA 5.7 DME and hold, continue climb-in-hold to 2000.
---	-----------	---

D-ATIS ARR <b>125.95</b> D-ATIS DEP <b>127.05</b>	NEW YORK APP CON <b>120.8 263.0</b>	LAGUARDIA TOWER <b>118.7 263.0</b>	GND CON <b>121.7 263.0</b>	CLNC DEL <b>135.2</b> <b>121.875 (COPTER)</b>	CPDLC
--	--	---------------------------------------	-------------------------------	---	-------



NE-2, 31 OCT 2024 to 28 NOV 2024

NE-2, 31 OCT 2024 to 28 NOV 2024

VGSI and ILS glidepath not coincident (VGSI Angle 3.10/TCH 55).		800	2000	GREKO INT
STEED I-GDI 5.9 RADAR	HULBI I-GDI 4.5 RADAR	*LOC only.		
2500	1400	*I-GDI 1.7	I-GDI 0.4	
GS 3.10° HCH 49	1400	COROR I-GDI 2.8		
Intermediate descent gradient is 765 feet/NM.				
CATEGORY	COPTER			
H-ILS 13	212/12 200 (200-¼)			
H-LOC 13	700/12 688 (700-¼)			
COROR FIX MINIMUMS				
H-LOC 13	500/12 488 (500-¼)			
ELEV 21 TDZE 12				
TWR 240				
FDZ/CL Rws 4, 13 and 22				
HIRL Rws 4-22 and 13-31				
REIL Rwy 31				
FAF to MAP 4.1 NM				
Knots	45	60	75	90 105
Min:Sec	5:28	4:06	3:17	2:44 2:21

# COPTER ILS or LOC RWY 13

LAGUARDIA (LGA)