

LOC/DME I-GDI 108.5 Chan 22	APP CRS 134°	Rwy Idg TDZE 12 Apt Elev 21	7002
---	------------------------	---	-------------

ILS or LOC RWY 13

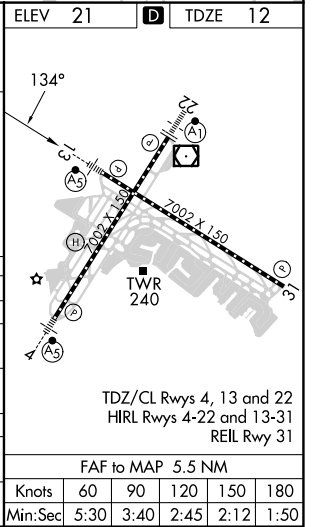
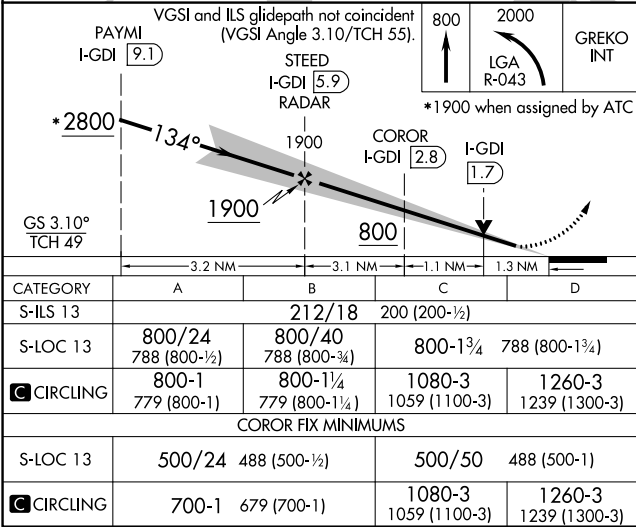
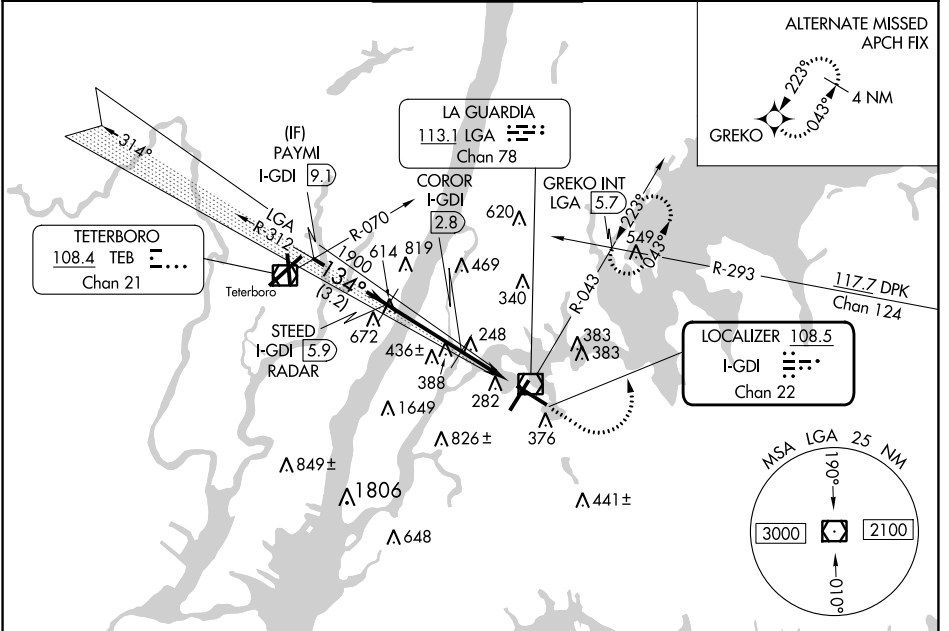
LAGUARDIA (LGA)

Radar required for procedure entry. DME or RADAR required for LOC only.

▼ For inop ALS, increase S-LOC 13 Cats C/D visibility to 2½ SM.
▲ Circling NA northwest of Rwy 4 and southwest of Rwy 13.

MALSR MISSED APPROACH: Climb to 800 then climbing left turn to 2000 on LGA VOR/DME R-043 to GREKO INT/LGA 5.7 DME and hold, continue climb-in-hold to 2000.

D-ATIS ARR 125.95 D-ATIS DEP 127.05	NEW YORK APP CON 120.8 263.0	LAGUARDIA TOWER 118.7 263.0	GND CON 121.7 263.0	CLNC DEL 135.2	CPDLC
--	--	---------------------------------------	-------------------------------	--------------------------	-------



NE-2, 31 OCT 2024 to 28 NOV 2024

NE-2, 31 OCT 2024 to 28 NOV 2024