

|   |                        |   |             |
|---|------------------------|---|-------------|
| LOC/DME I-LGA<br><b>110.5</b><br>Chan <b>42</b> | APP CRS<br><b>044°</b> | Rwy Idg<br>TDZE <b>21</b><br>Apt Elev <b>21</b> | <b>7002</b> |
|---|------------------------|---|-------------|

# ILS or LOC RWY 4

LAGUARDIA (LGA)

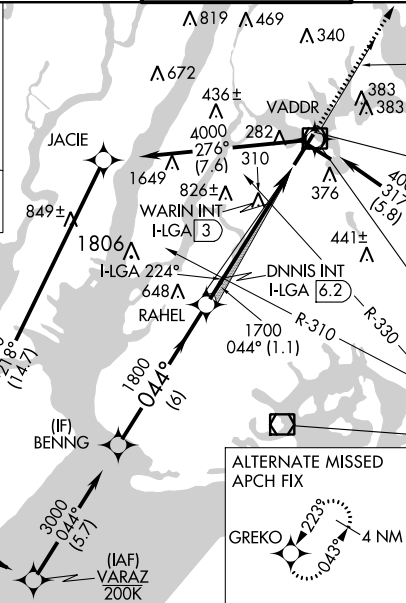
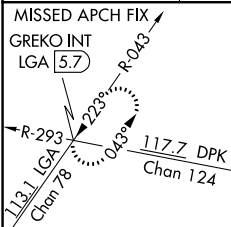
RNP APCH - GPS.

**▼** Rwy 4 helicopter visibility reduction below RVR 5000 NA. Inop table does not apply to S-LOC 4 Cats A and B and WARIN fix minimums Cats A and B. For inop ALS increase S-ILS 4 all Cats visibility to RVR 4500. Going below glidepath may not provide obstacle clearance inside DA. Crossing Rwy threshold below charted TCH may not provide required visual area obstacle clearance. Autopilot couple approach NA. Circling NA northwest of Rwy 4 and southwest of Rwy 13.  
\* RVR 2400 authorized with use of FD or HUD to DA.



**MISSED APPROACH:**  
Climb to 2000 on LGA VOR/DME R-043 to GREKO INT/LGA 5.7 DME and hold, continue climb-in-hold to 2000.

|                          |  |                    |                                       |                               |                          |       |
|--------------------------|--|--------------------|---------------------------------------|-------------------------------|--------------------------|-------|
| D-ATIS ARR <b>125.95</b> | NEW YORK APP CON<br>D-ATIS DEP <b>127.05</b> | <b>120.8 263.0</b> | LAGUARDIA TOWER<br><b>118.7 263.0</b> | GND CON<br><b>121.7 263.0</b> | CLNC DEL<br><b>135.2</b> | CPDLC |
|--------------------------|--|--------------------|---------------------------------------|-------------------------------|--------------------------|-------|

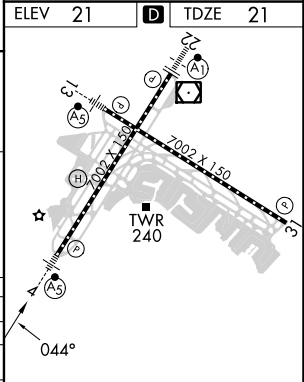
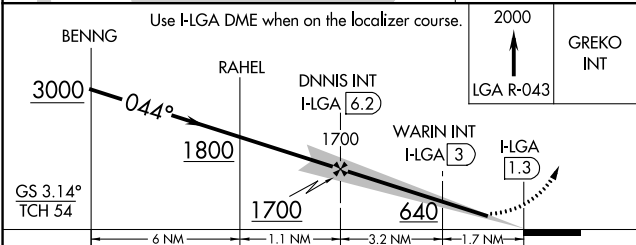


**LOCALIZER 110.5**  
I-LGA  
Chan 42

**LA GUARDIA**  
113.1 LGA  
Chan 78

**KENNEDY**  
115.9 JFK  
Chan 106

**CANARSIE**  
112.3 CRI  
Chan 70



|   |                    |             |                      |                        |
|---|--------------------|-------------|----------------------|------------------------|
| CATEGORY  | A                  | B           | C                    | D                      |
| S-ILS 4 *   | 283/40 262 (300-¾) |             |                      |                        |
| S-LOC 4   | 640/50             | 619 (700-1) | 640-1⅜               | 619 (700-1⅜)           |
| <b>C</b> CIRCLING                                       | 680-1              | 659 (700-1) | 700-2<br>679 (700-2) | 760-2¼<br>739 (800-2¼) |
| WARIN FIX MINIMUMS (DUAL VOR RECEIVERS OR DME REQUIRED) |                    |             |                      |                        |
| S-LOC 4   | 560/50             | 539 (600-1) | 560/55               | 539 (600-1)            |
| <b>C</b> CIRCLING                                       | 680-1              | 659 (700-1) | 700-2<br>679 (700-2) | 760-2¼<br>739 (800-2¼) |

|          |  |  |  |  |                                  |  |  |  |  |
|----------|--|--|--|--|----------------------------------|--|--|--|--|
| ELEV 21  |  |  |  |  | D TDZE 21                        |  |  |  |  |
| TCH 54   |  |  |  |  | TWR 240                          |  |  |  |  |
| GS 3.14° |  |  |  |  | FD TO MAP 4.9 NM                 |  |  |  |  |
| 6 NM     |  |  |  |  | Knots 60 90 120 150 180          |  |  |  |  |
| 1.1 NM   |  |  |  |  | Min:Sec 4:54 3:16 2:27 1:58 1:38 |  |  |  |  |
| 3.2 NM   |  |  |  |  |                                  |  |  |  |  |
| 1.7 NM   |  |  |  |  |                                  |  |  |  |  |

NE-2, 31 OCT 2024 to 28 NOV 2024

NE-2, 31 OCT 2024 to 28 NOV 2024