

# PARK VISUAL RWY 31

AL-289 (FAA)

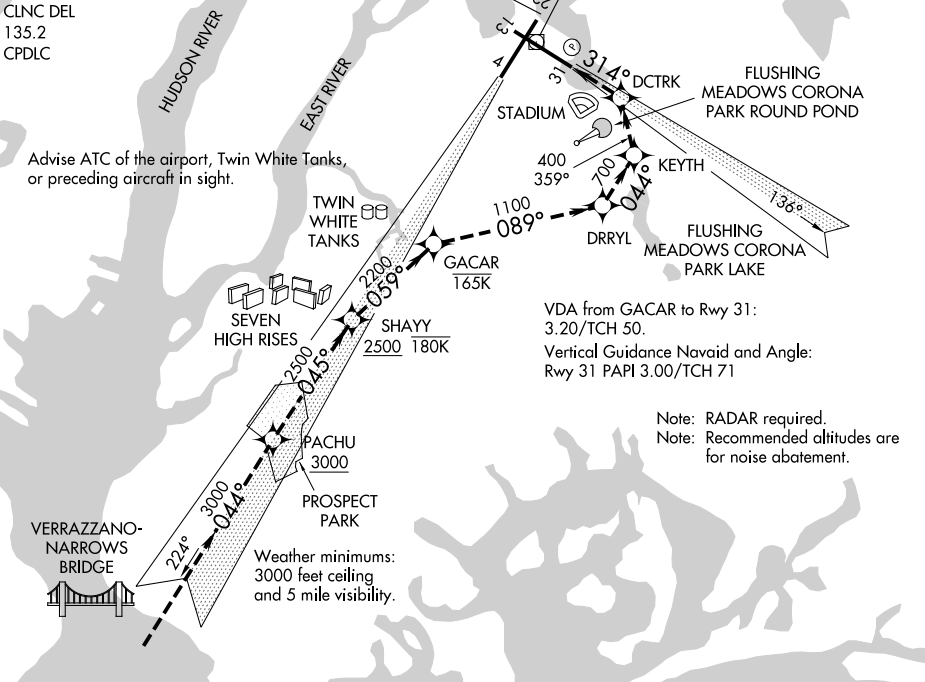
LAGUARDIA (LGA)  
NEW YORK, NEW YORK

D-ATIS ARR 125.95  
 D-ATIS DEP 127.05  
 NEW YORK APP CON  
 120.8 263.0  
 LAGUARDIA TOWER  
 118.7 263.0  
 GND CON  
 121.7 263.0  
 CLNC DEL  
 135.2  
 CPDLC

Advise ATC of the airport, Twin White Tanks, or preceding aircraft in sight.

**LOCALIZER 110.5**  
 H-LGA  
 Chan 42

**LOCALIZER 108.5**  
 I-PZV  
 Chan 22  
 LOC offset 1.71°



VDA from GACAR to Rwy 31:  
 3.20/TCH 50.  
 Vertical Guidance Navaid and Angle:  
 Rwy 31 PAPI 3.00/TCH 71

Note: RADAR required.  
 Note: Recommended altitudes are for noise abatement.

NE-2, 31 OCT 2024 to 28 NOV 2024

NE-2, 31 OCT 2024 to 28 NOV 2024

1 NM	2	3	4	5	6	7	8	9	10	11	12	13	14	15	16
------	---	---	---	---	---	---	---	---	----	----	----	----	----	----	----

When cleared for the PARK VISUAL RWY 31 aircraft may proceed via the RNAV (GPS) X RWY 31 approach to Rwy 31 and/or cross PACHU at 3000 or above and tracking 045° to SHAIYY at or below 180K (Seven High Rises) at 2500 or above and turn right tracking 059° to GACAR at or below 165K (Twin White Tanks) then turn right tracking 089° to DRRYL (Flushing Meadows Corona Park Lake) then turn left tracking 044° to KEYTH (Flushing Meadows Corona Park Round Pond) then left turn tracking 359° to DCTRK (stadium) then left turn direct RWY 31.

# PARK VISUAL RWY 31

40°47'N-73°52'W

NEW YORK, NEW YORK  
LAGUARDIA (LGA)