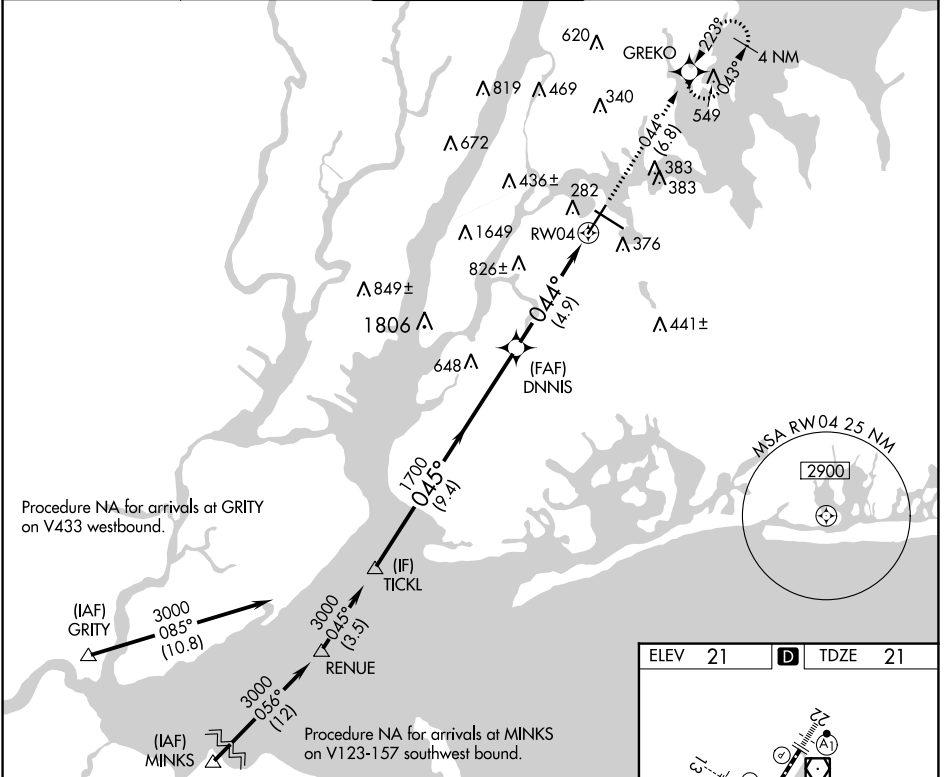


APP CRS	Rwy Idg	<b>7002</b>
<b>044°</b>	TDZE	<b>21</b>
	Apt Elev	<b>21</b>

# RNAV (RNP) Z RWY 4

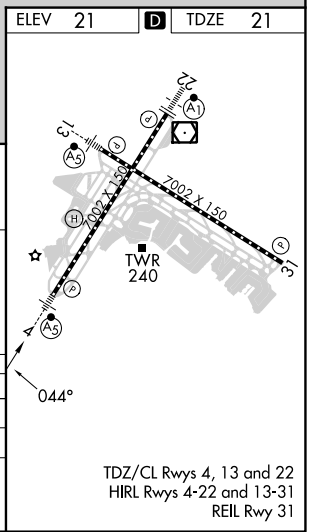
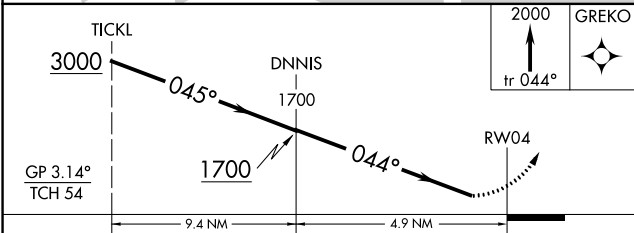
LAGUARDIA (LGA)

RNP AR APCH - GPS.		MALSR		MISSED APPROACH: Climb to 2000 on track 044° to GREKO and hold, continue climb-in-hold to 2000.	
<p><b>▼</b> For uncompensated Baro-VNAV systems, procedure NA below -12°C or above 54°C. For inop ALS, increase RNP 0.18 visibility to 1 3/8 SM.</p>					
D-ATIS ARR	<b>125.95</b>	NEW YORK APP CON	<b>120.8 263.0</b>	LAGUARDIA TOWER	<b>118.7 263.0</b>
D-ATIS DEP	<b>127.05</b>			GND CON	<b>121.7 263.0</b>
				CLNC DEL	<b>135.2</b>
				CPDLC	



NE-2, 31 OCT 2024 to 28 NOV 2024

NE-2, 31 OCT 2024 to 28 NOV 2024



CATEGORY	A	B	C	D
RNP 0.18 DA		482/50	461 (500-1)	
RNP 0.30 DA		610-1 1/4	589 (600-1 1/4)	
<b>AUTHORIZATION REQUIRED</b>				

TDZ/CL Rws 4, 13 and 22  
 HIRL Rws 4-22 and 13-31  
 REIL Rwy 31