

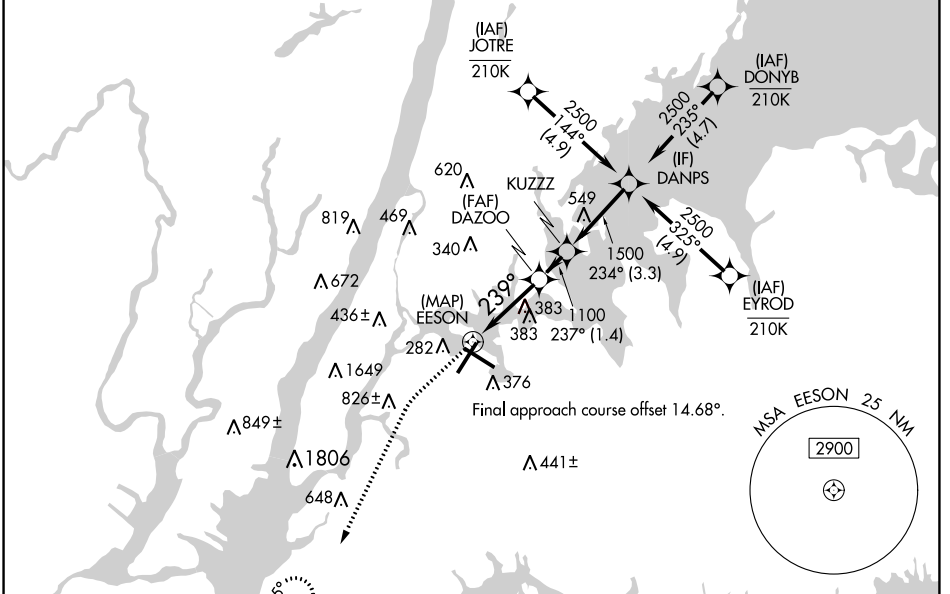
APP CRS	Rwy Idg	7002
239°	TDZE	12
	Apt Elev	21

RNAV (GPS) X RWY 22

LAGUARDIA (LGA)

RNP APCH - GPS.		ALSF-1 	MISSED APPROACH: Climb to 500 then climbing left turn to 3000 direct PROUD and hold, continue climb-in-hold to 3000.
	Circling NA northwest of Rwy 4 and southwest of Rwy 13. For uncompensated Baro-VNAV systems, LNAV/VNAV NA below -11°C or above 54°C. For inop ALS, increase LNAV/VNAV all Cats visibility to RVR 5500; increase LNAV Cats C/D visibility to 1/4 SM.		

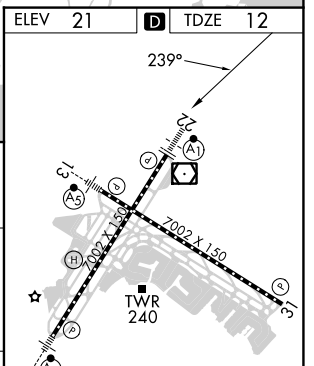
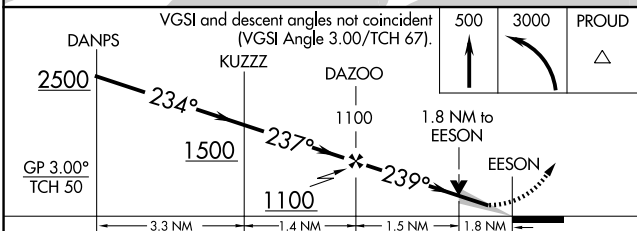
D-ATIS ARR	125.95	NEW YORK APP CON	120.8 263.0	LAGUARDIA TOWER	118.7 263.0	GND CON	121.7 263.0	CLNC DEL	135.2	CPDLC
D-ATIS DEP	127.05									



NE-2, 31 OCT 2024 to 28 NOV 2024

NE-2, 31 OCT 2024 to 28 NOV 2024

ELEV	21	D	TDZE	12
------	-----------	----------	------	-----------



CATEGORY	A	B	C	D
LNAV/VNAV DA		381/35	369 (400-%)	
LNAV MDA	640/24	628 (700-1/2)	640-1 3/8	628 (700-1 3/8)
C CIRCLING	680-1	659 (700-1)	700-2 679 (700-2)	760-2 1/4 739 (800-2 1/4)

TDZ/CL Rws 4, 13 and 22
 HIRL Rws 4-22 and 13-31
 REIL Rwy 31