

WAAS CH **48928**
W31A

APP CRS **314°**

Rwy Idg **7002**
 TDZE **7**
 Apt Elev **21**

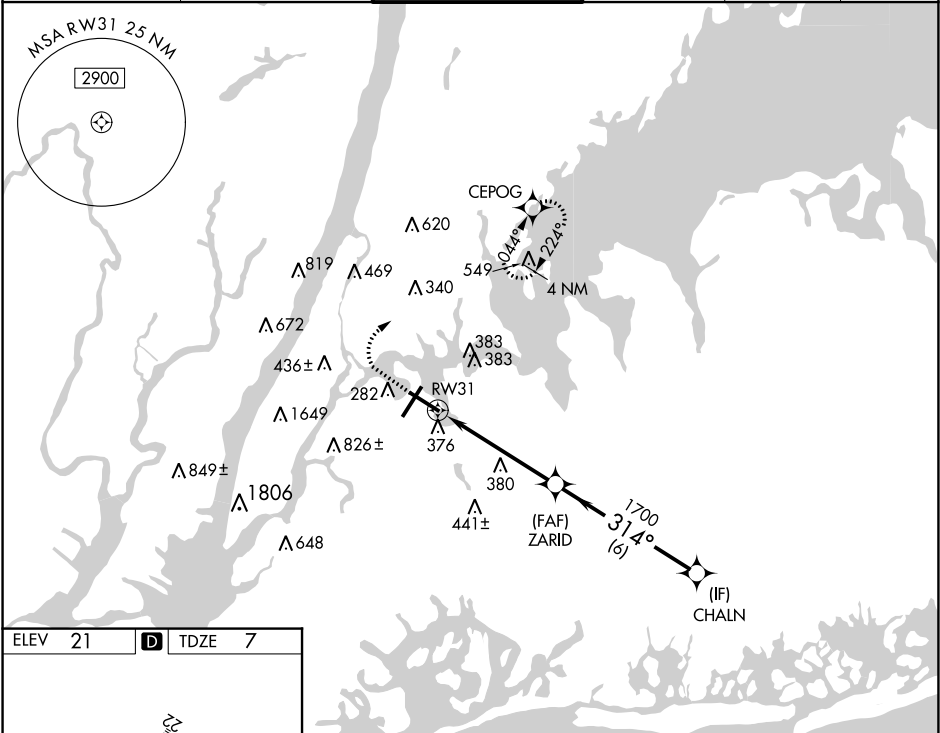
RNAV (GPS) Z RWY 31
 LAGUARDIA (LGA)

RNP APCH - GPS.

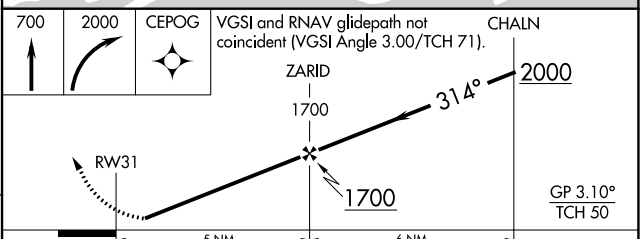
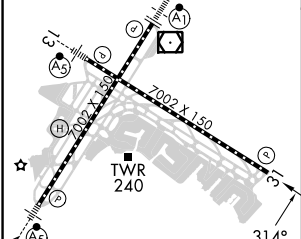
▼ Rwy 31 helicopter visibility reduction below RVR 5000 NA. For uncompensated Baro-VNAV systems, LNAV/VNAV NA below -12°C or above 48°C. Circling NA northwest of Rwy 4 and southwest of Rwy 13.

MISSED APPROACH: (Do not exceed 220K until CEPOG) Climb to 700 then climbing right turn to 2000 direct CEPOG and hold.

D-ATIS ARR	125.95	NEW YORK APP CON	120.8 263.0	LAGUARDIA TOWER	118.7 263.0	GND CON	121.7 263.0	CLNC DEL	135.2	CPDLC
D-ATIS DEP	127.05									



ELEV	21	D	TDZE	7
------	----	----------	------	---



CATEGORY	A	B	C	D
LPV DA		330/50	323 (400-1)	
LNAV/VNAV DA		618-1 1/4	611 (600-1 1/4)	
LNAV MDA	640/55	633 (700-1)	640-1 1/4	633 (700-1 1/4)
C CIRCLING	700-1	679 (700-1)	1080-3 1059 (1100-3)	1260-3 1239 (1300-3)

TDZ/CL Rws 4, 13 and 22
 HIRL Rws 4-22 and 13-31
 REIL Rwy 31

NE-2, 31 OCT 2024 to 28 NOV 2024

NE-2, 31 OCT 2024 to 28 NOV 2024