

(WNDSR.AANET1) 24249

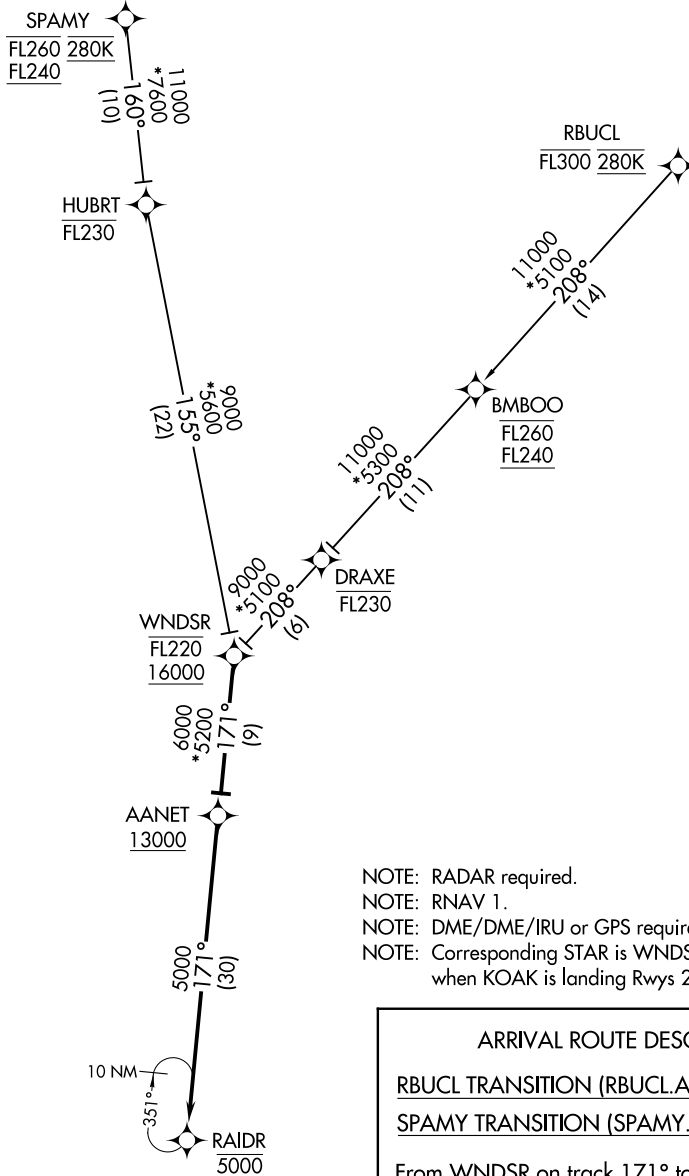
AANET ONE ARRIVAL (RNAV)

AL-294 (FAA)

SAN FRANCISCO BAY OAKLAND INTL (OAK)
OAKLAND, CALIFORNIA

SW-2, 31 OCT 2024 to 28 NOV 2024

SW-2, 31 OCT 2024 to 28 NOV 2024



D-ATIS
133.775
OAKLAND CENTER
125.85 323.0
NORCAL APP CON
125.35 310.8
OAKLAND TOWER
127.2 256.9 (Rwy 12)
GND CON
121.75

- NOTE: RADAR required.
- NOTE: RNAV 1.
- NOTE: DME/DME/IRU or GPS required.
- NOTE: Corresponding STAR is WNDNR. Expect WNDNR when KOAK is landing Rwy 28L/R and 30.

ARRIVAL ROUTE DESCRIPTION

RBUCLE TRANSITION (RBUCLE.AANET1)

SPAMY TRANSITION (SPAMY.AANET1)

From WNDNR on track 171° to cross AANET at or above 13000.

LANDING RUNWAY 12: From AANET on track 171° to cross RAIDR at 5000. Expect assigned instrument approach procedure.

NOTE: Chart not to scale.



AANET ONE ARRIVAL (RNAV)

(WNDSR.AANET1) 05MAR15

OAKLAND, CALIFORNIA
SAN FRANCISCO BAY OAKLAND INTL (OAK)