

LOC/DME I-INB <b>108.7</b> Chan <b>24</b>	APP CRS <b>296°</b>	Rwy ldg <b>10000</b> TDZE <b>9</b> Apt Elev <b>9</b>
---	------------------------	--

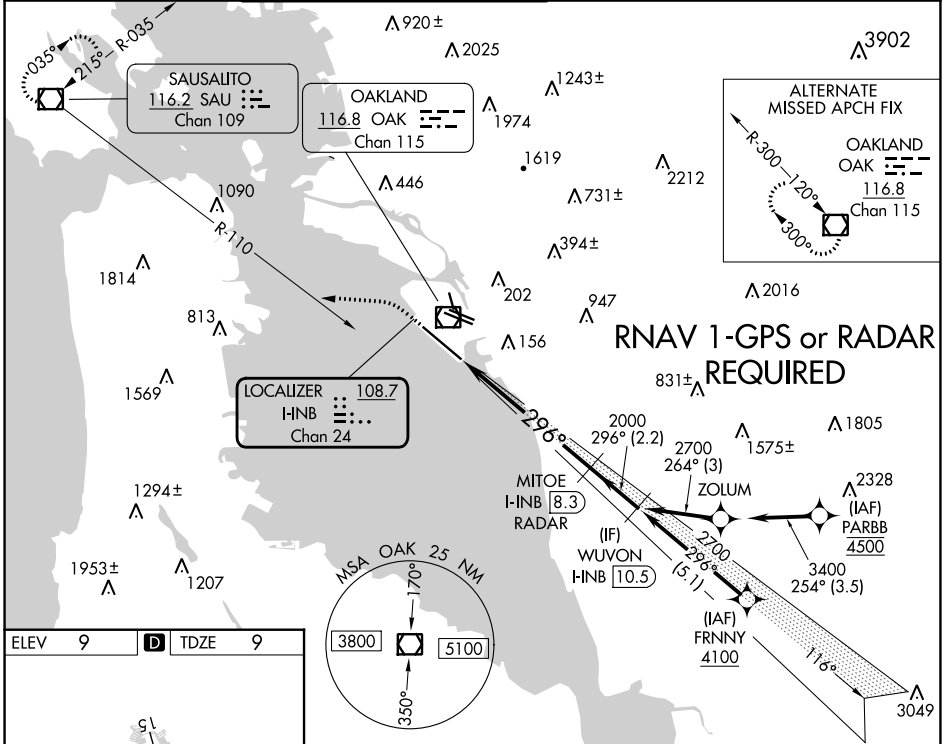
# ILS RWY 30 (CAT II & III)

## SAN FRANCISCO BAY OAKLAND INTL (OAK)

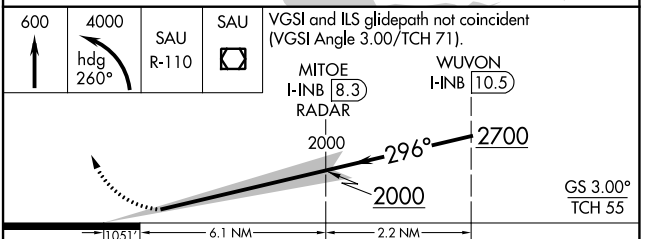
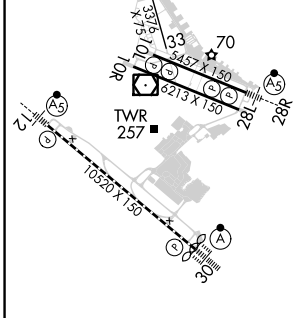
**⚠** DME or RADAR required. CAT II: RVR 1000 authorized with specific OPSPEC, MSPEC, or LOA approval and use of autoland or HUD to touchdown. Missed approach requires minimum climb of 240 feet per NM to 2700, if unable to meet climb gradient, see ILS or LOC RWY 30.

ALSF-2 **⚠** MISSED APPROACH: Climb to 600 then climbing left turn to 4000 on heading 260° and on SAU VOR/DME R-110 to SAU VOR/DME and hold, continue climb-in-hold to 4000.

D-ATIS <b>133.775</b>	NORCAL APP CON <b>125.35 263.15</b>	OAKLAND TOWER <b>118.3 291.65</b> (Rwys 10L/R-28L/R, 15-33) <b>127.2 256.9</b> (Rwy 12-30)	GND CON <b>121.9</b> (Rwys 10L/R-28L/R, 15-33) <b>121.75</b> (Rwy 12-30)	CLNC DEL <b>121.1</b>	CPDLC
--------------------------	--	--	--	--------------------------	-------



ELEV <b>9</b>	<b>D</b> TDZE <b>9</b>
---------------	------------------------



CATEGORY	A	B	C	D
S-ILS 30	CAT II RA 109/12 100 DA 109			
S-ILS 30	CAT III RVR 06			

**CATEGORY II & III ILS - SPECIAL AIRCREW & AIRCRAFT CERTIFICATION REQUIRED**

SW-2, 31 OCT 2024 to 28 NOV 2024

SW-2, 31 OCT 2024 to 28 NOV 2024