

APP CRS	Rwy Idg	10000
116°	TDZE	9
	Apt Elev	9

RNAV (RNP) Z RWY 12

SAN FRANCISCO BAY OAKLAND INTL (OAK)

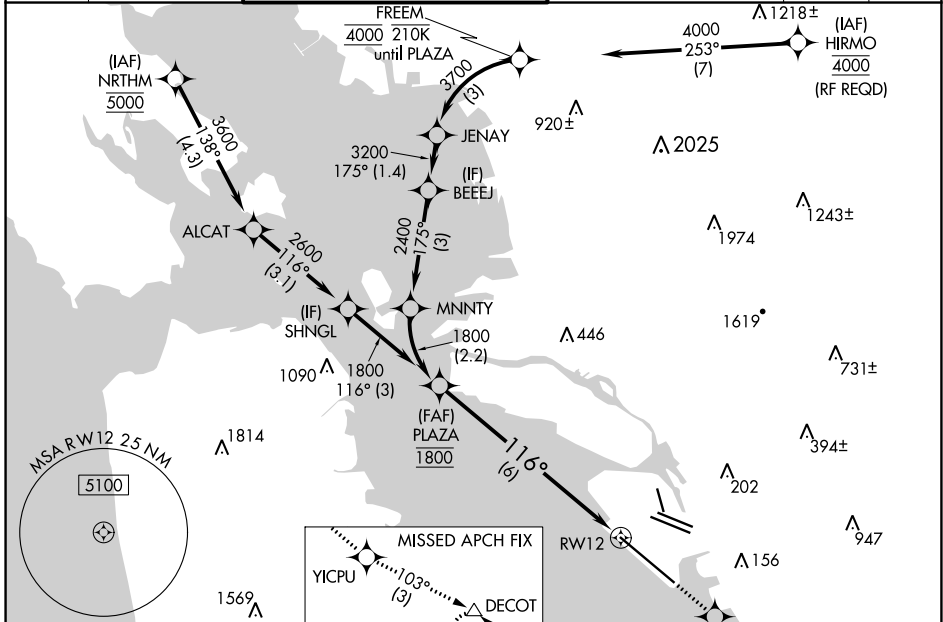
RNP AR APCH.

For uncompensated Baro-VNAV systems, procedure NA below 0°C or above 54°C. For inop ALS increase RNP 0.15 visibility all Cats to RVR 4500, RNP 0.30 visibility all Cats to RVR 5500.

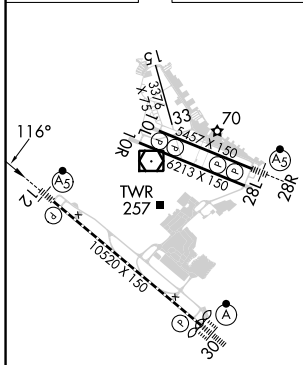


MISSED APPROACH: Climb direct HISIS to cross HISIS at or below 1600 then climb to 5400 on track 116° to YICPU and on track 103° to DECOT and hold, continue climb-in-hold to 5400.

D-ATIS 133.775	NORCAL APP CON 125.35 263.15	OAKLAND TOWER 118.3 291.65 (Rwys 10L/R-28L/R, 15-33) 127.2 256.9 (Rwy 12-30)	GND CON 121.9 (Rwys 10L/R-28L/R, 15-33) 121.75 (Rwy 12-30)	CLNC DEL 121.1	CPDLC
--------------------------	--	---	--	--------------------------	-------



ELEV	9	TDZE	9
------	----------	------	----------



REIL Rwy 10R
TDZ/CL Rwy 30
MIRL Rwy 15-33
HIRL Rwys 12-30, 10L-28R, 10R-28L

See planview for multiple IF locations.

HISIS	5400	YICPU	DECOT
1600	tr 116°	tr 103°	△

VGSi and RNAV glidepath not coincident (VGSi Angle 2.75/TCH 70).

GP 2.75°
TCH 55

CATEGORY	A	B	C	D
RNP 0.15 DA		289/24	280 (300-½)	
RNP 0.30 DA		386/35	377 (400-⅔)	

AUTHORIZATION REQUIRED

SW-2, 31 OCT 2024 to 28 NOV 2024

SW-2, 31 OCT 2024 to 28 NOV 2024