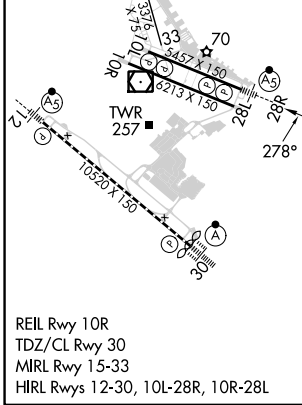
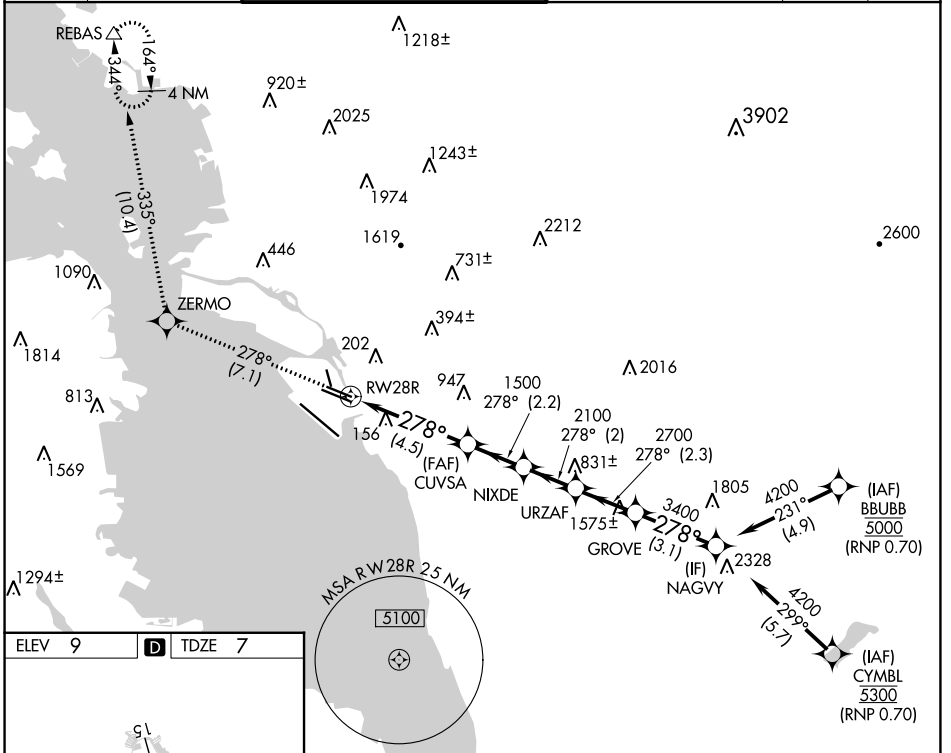


APP CRS <b>278°</b>	Rwy Idg TDZE Apt Elev	<b>5457</b> <b>7</b> <b>9</b>
------------------------	-----------------------------	-------------------------------------

# RNAV (RNP) Z RWY 28R

SAN FRANCISCO BAY OAKLAND INTL (OAK)

D-ATIS <b>133.775</b>	NORCAL APP CON <b>125.35 263.15</b>	OAKLAND TOWER <b>118.3 291.65</b> (Rwys 10L/R-28L/R, 15-33) <b>127.2 256.9</b> (Rwy 12-30)		GND CON <b>121.9</b> (Rwys 10L/R-28L/R, 15-33) <b>121.75</b> (Rwy 12-30)	CLNC DEL <b>121.1</b>	CPDLC
		<p>For uncompensated Baro-VNAV systems, procedure NA below 1°C (34°F) or above 54°C (130°F). For inop MALSR, increase RNP 0.11 DA all Cats visibility to RVR 4500. GPS required.</p> <p>MALSR </p> <p>MISSED APPROACH: Climb to 3000 on track 278° to ZERMO and on track 335° to REBAS and hold.</p>				



ELEV 9	<b>D</b>	TDZE 7		
3000	ZERMO	REBAS		
↑ tr 278°		tr 335°		
<p>RW28R 1500</p> <p>CUVSA 1500</p> <p>NIXDE 2100</p> <p>URZAF 2700</p> <p>GROVE 3400</p> <p>NAGVY 4200</p> <p>GP 3.00° TCH 53</p>				
<p>4.5 NM    2.2 NM    2 NM    2.3 NM    3.1 NM</p>				
CATEGORY	A	B	C	D
RNP 0.11 DA		276/24	269 (300-½)	
RNP 0.30 DA		414/45	407 (500-¾)	
<b>AUTHORIZATION REQUIRED</b>				

SW-2, 31 OCT 2024 to 28 NOV 2024

SW-2, 31 OCT 2024 to 28 NOV 2024