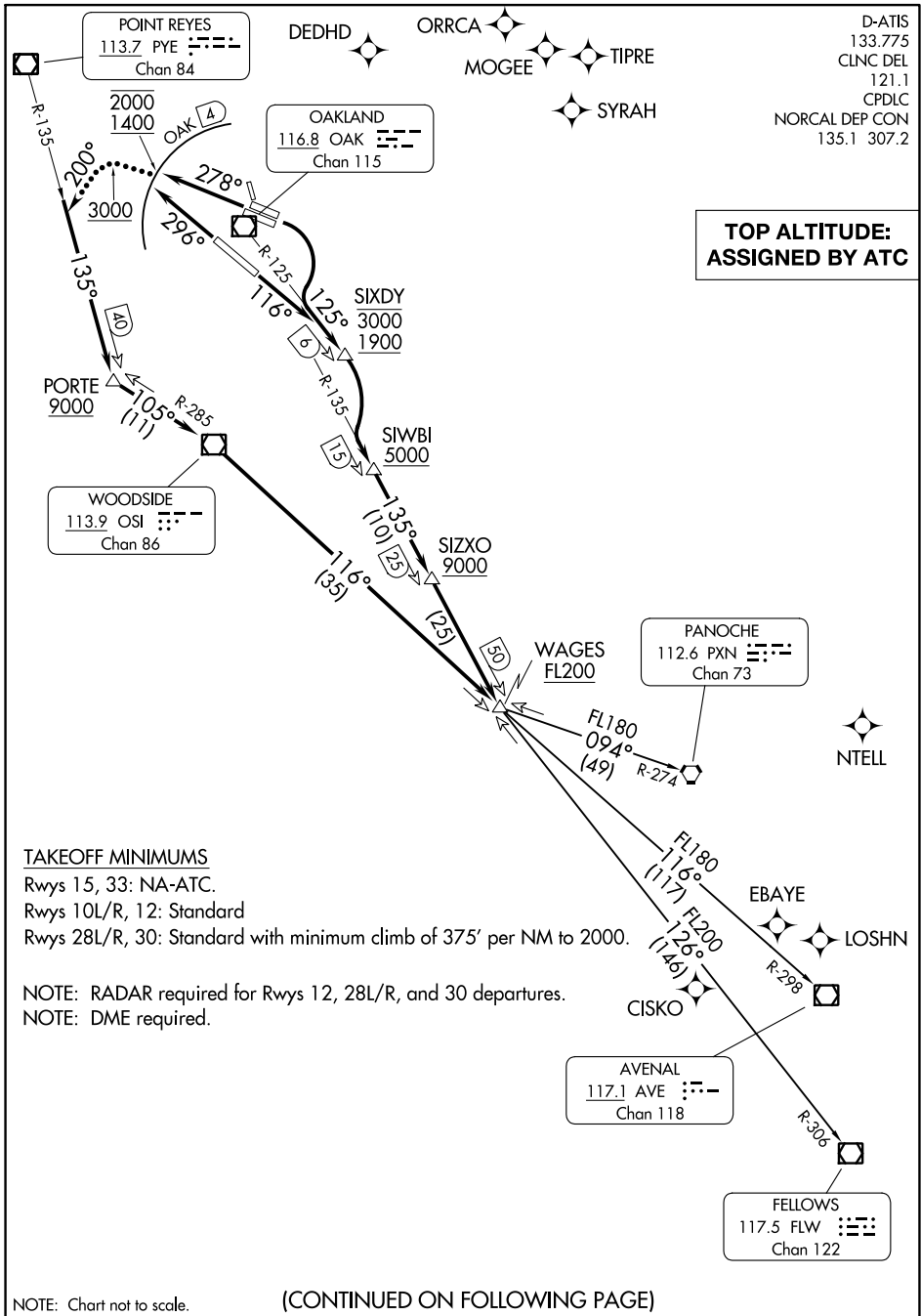


# SKYLINE ONE DEPARTURE

SAN FRANCISCO BAY OAKLAND INTL (OAK)

AL-294 (FAA)

OAKLAND, CALIFORNIA



**TOP ALTITUDE:  
ASSIGNED BY ATC**

### TAKEOFF MINIMUMS

Rwys 15, 33: NA-ATC.

Rwys 10L/R, 12: Standard

Rwys 28L/R, 30: Standard with minimum climb of 375' per NM to 2000.

NOTE: RADAR required for Rwys 12, 28L/R, and 30 departures.

NOTE: DME required.

(CONTINUED ON FOLLOWING PAGE)

# SKYLINE ONE DEPARTURE

OAKLAND, CALIFORNIA

SAN FRANCISCO BAY OAKLAND INTL (OAK)

SW-2, 31 OCT 2024 to 28 NOV 2024

SW-2, 31 OCT 2024 to 28 NOV 2024