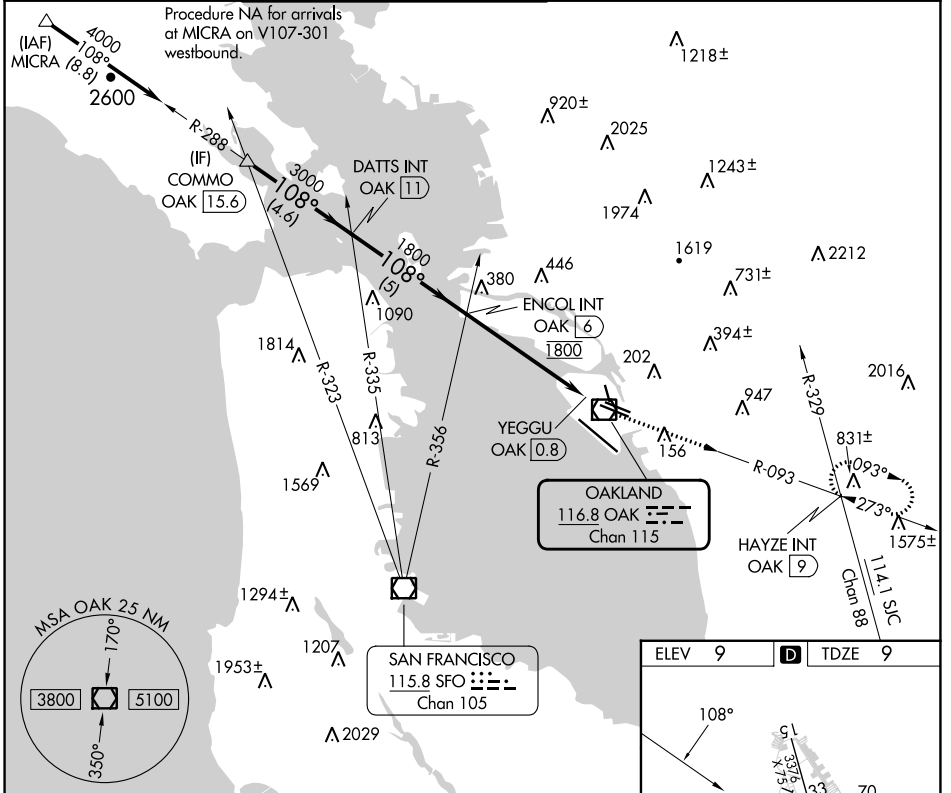


VOR/DME OAK 116.8 Chan 115	APP CRS 108°	Rwy Idg 6213 TDZE 9 Apt Elev 9
--	------------------------	---

VOR RWY 10R

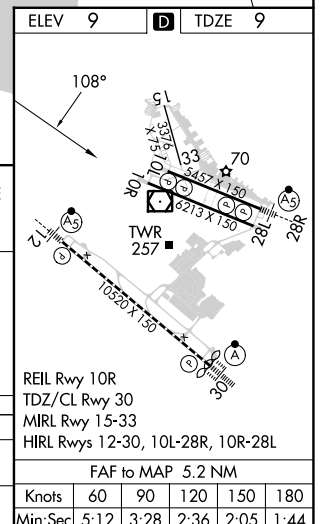
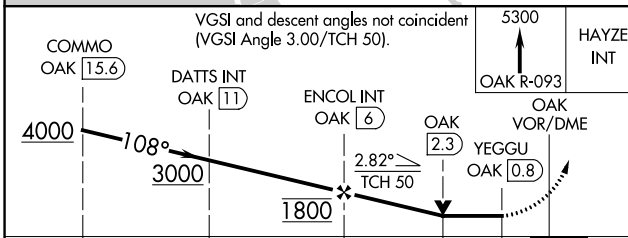
SAN FRANCISCO BAY OAKLAND INTL (OAK)

▼ ▲ Helicopter visibility reduction below 3/4 SM NA.	MISSED APPROACH: Climb to 5300 on OAK VOR/DME R-093 to HAYZE INT/OAK 9 DME and hold, continue climb-in-hold to 5300.				
D-ATIS 133.775	NORCAL APP CON 125.35 263.15	OAKLAND TOWER 118.3 291.65 (Rwys 10L/R-28L/R, 15-33) 127.2 256.9 (Rwy 12-30)	GND CON 121.9 (Rwys 10L/R-28L/R, 15-33) 121.75 (Rwy 12-30)	CLNC DEL 121.1	CPDLC



SW-2, 31 OCT 2024 to 28 NOV 2024

SW-2, 31 OCT 2024 to 28 NOV 2024



CATEGORY	A	B	C	D
S-10R	740-1 731 (800-1)		740-2 731 (800-2)	
C CIRCLING	740-1 731 (800-1)		740-2 731 (800-2)	1380-3 1371 (1400-3)

REIL Rwy 10R	TDZ/CL Rwy 30	MIRL Rwy 15-33	HIRL Rwys 12-30, 10L-28R, 10R-28L
FAF to MAP 5.2 NM			
Knots	60	90	120 150 180
Min:Sec	5:12	3:28	2:36 2:05 1:44