

TACAN Z RWY 36

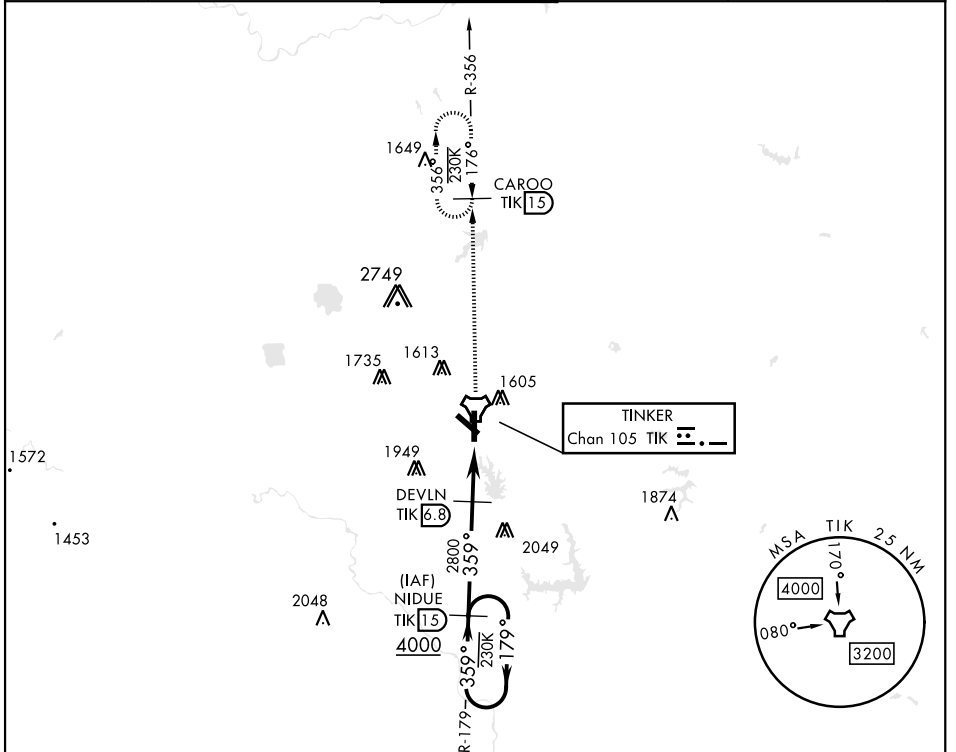
TACAN TIK Chan 105	APCH CRS 359°	Rwy Idg 11,100 TDZE 1291 Arprt Elev 1291
------------------------------	-------------------------	---

[USAF]

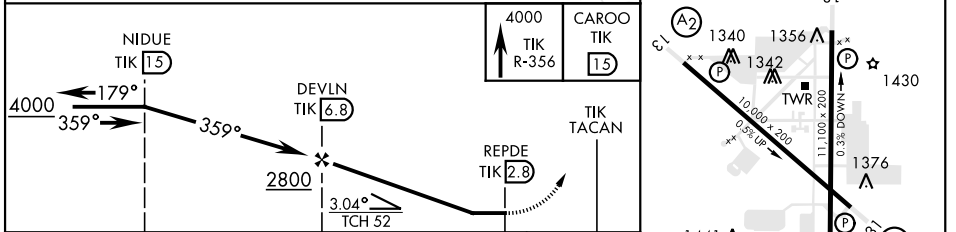
TINKER AFB (KTIK)

▼ * When ALS inop, increase CAT AB RVR to 50 and vis to 1 mile, CAT CDE increase vis by ½ mile. ** CAT E Circling not authorized in sector S of Rwy 13-31 and W of Rwy 18-36. Circling NA to Rwy 18.	ALSF-1 	MISSED APPROACH: Climb to 4000 on TIK TACAN R-356 to CAROO and hold.
---	------------	---

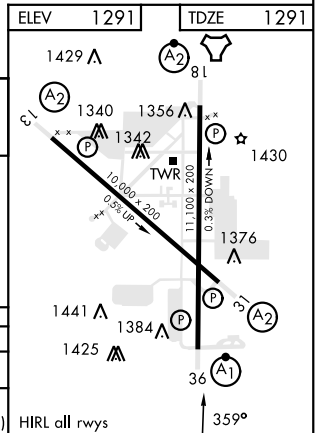
ATIS ★ 270.1	OKE CITY APP CON 120.45 288.325	TOWER 124.45 251.05	GND CON 121.8 275.8	CLNC DEL 119.7 335.8	ASR
------------------------	---	-------------------------------	-------------------------------	--------------------------------	-----



EMERG SAFE ALT 100 NM 4700



CATEGORY	A	B	C	D	E
S-36 *	1720/24	429 (500-½)	1720/40 429 (500-¾)		
CIRCLING **	1820-1	529 (600-1)	1960-1¾ 669 (700-1¾)	1960-2 669 (700-2)	1960-2¼ 669 (700-2¼)



TACAN Z RWY 36

SC-1, 31 OCT 2024 to 28 NOV 2024

SC-1, 31 OCT 2024 to 28 NOV 2024