


LOC/DME I-RGR	APP CRS	Rwy Idg	9802
110.9	356°	TDZE	1294
Chan 46		Apt Elev	1296

ILS RWY 35R (SA CAT I)
OKC WILL ROGERS INTL (OKC)

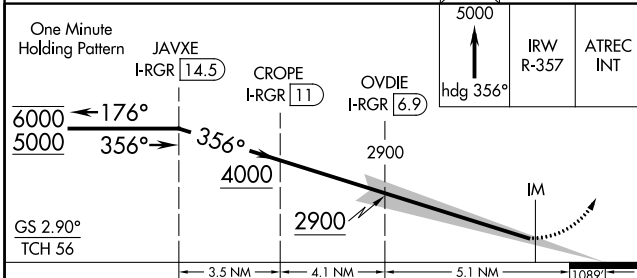
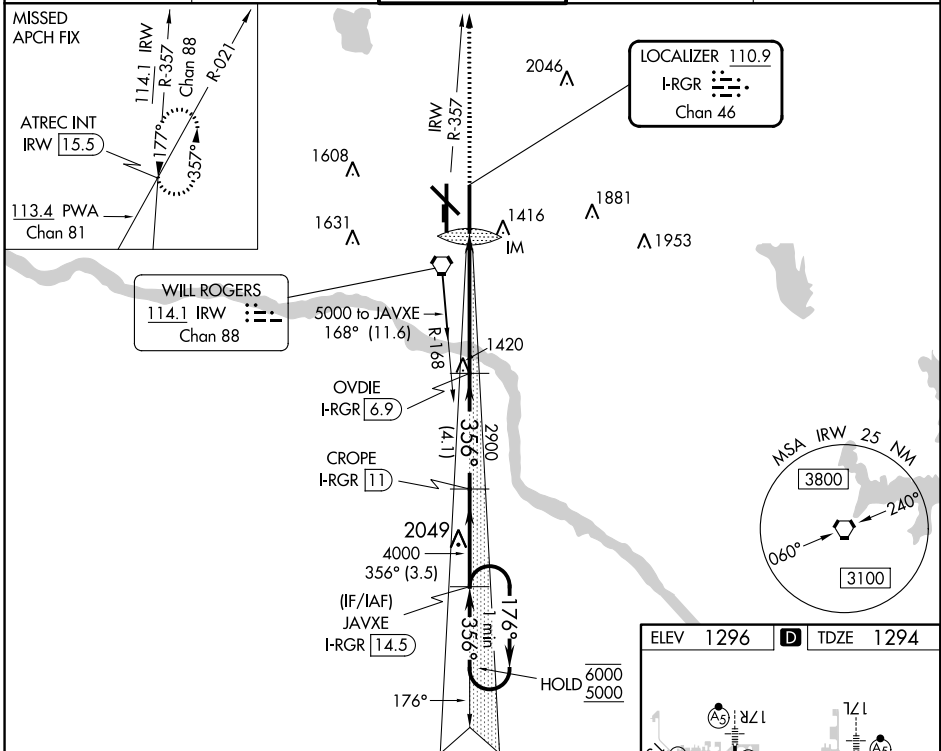
DME required.

ASR Simultaneous approach authorized. Requires specific OPSPEC, MSPEC, or LOA approval and use of HUD to DH.

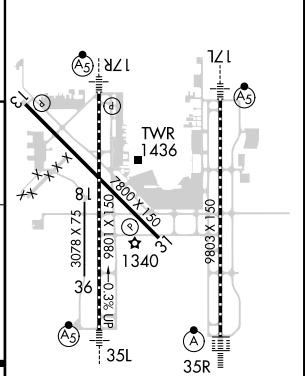
ALSf-2 

MISSED APPROACH: Climb to 5000 on heading 356° and on IRW VORTAC R-357 to ATREC INT/IRW 15.5 DME and hold, continue climb-in-hold to 5000.

D-ATIS	OKE CITY APP CON	ROGERS TOWER	GND CON	CLNC DEL
125.85	124.6 266.8	119.35 269.45	121.9 348.6	124.35



ELEV 1296	D TDZE 1294
-----------	--------------------



CATEGORY	A	B	C	D
S-ILS 35R	RA 178/14 150 DA 1444			

SA CATEGORY I ILS - SPECIAL AIRCREW & AIRCRAFT CERTIFICATION REQUIRED

REIL Rwy 13 and 31
TDZ/CL Rwy 35R
MIRL Rwy 13-31
HIRL Rwy 17L-35R and 17R-35L