

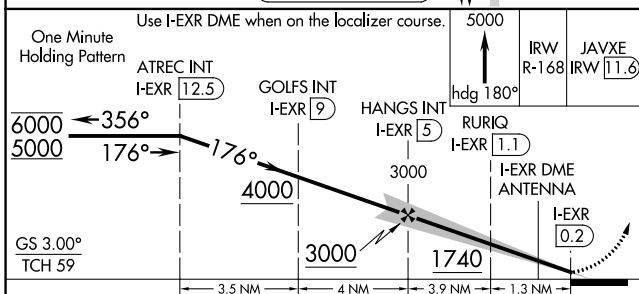
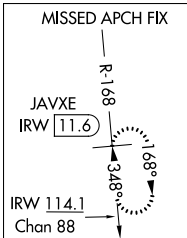
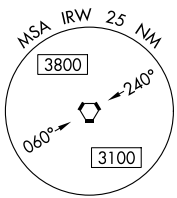
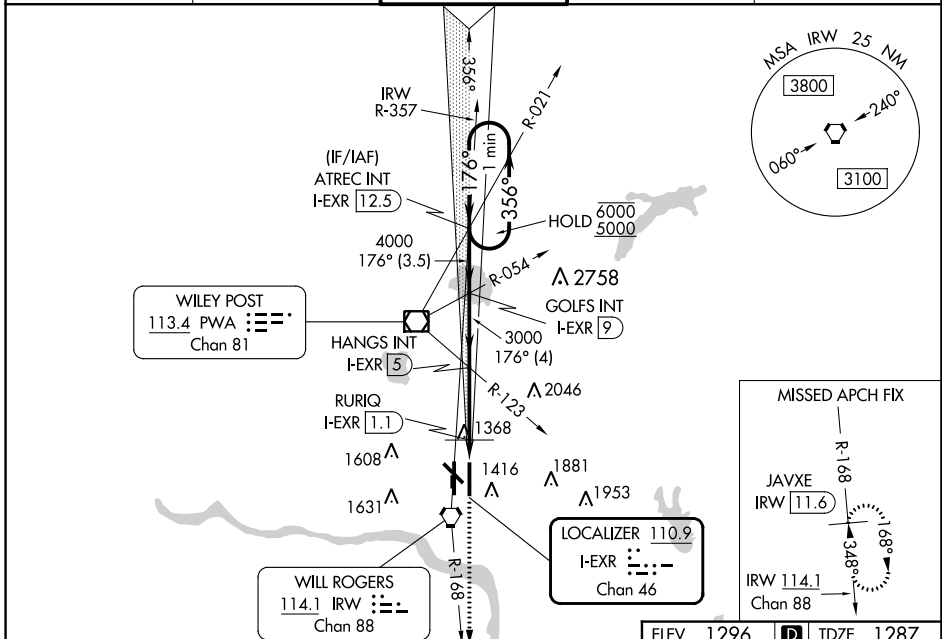
LOC/DME I-EXR <b>110.9</b> Chan 46	APP CRS <b>176°</b>	Rwy Idg TDZE Apt Elev	<b>9802</b> <b>1287</b> <b>1296</b>
--	------------------------	-----------------------------	---

# ILS or LOC RWY 17L

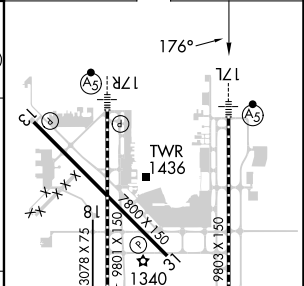
OKC WILL ROGERS INTL (OKC)

DME required. RADAR required for procedure entry.		MALSR 	MISSED APPROACH: Climb to 5000 on heading 180° and on IRW VORTAC R-168 to JAVXE/IRW 11.6 DME and hold, continue climb-in-hold to 5000.
<p><b>ASR</b> Simultaneous approach authorized. Inop table does not apply to S-ILS 17L. For inop ALS, increase S-LOC 17L visibilities Cats A and B to RVR 5500, and Cat E to 1 3/8 SM. RURIQ Fix Minimums: For inop ALS, increase S-LOC 17L visibilities Cats A and B to RVR 5500, and Cats C, D, and E to RVR 6000. Autopilot coupled approach NA below 1480.</p>			

D-ATIS <b>125.85</b>	OKE CITY APP CON <b>124.6 266.8</b>	<b>ROGERS TOWER</b> <b>119.35 269.45</b>	GND CON <b>121.9 348.6</b>	CLNC DEL <b>124.35</b>
-------------------------	--	---	-------------------------------	---------------------------



ELEV 1296	<b>D</b> TDZE 1287
-----------	--------------------



CATEGORY	A	B	C	D	E
S-ILS 17L	1487/40 200 (200-3/4)				
S-LOC 17L	1740/40	453 (500-3/4)	1740/45	453 (500-3/4)	
CIRCLING	1740-1 444 (500-1)	1760-1 464 (500-1)	1960-1 3/4 664 (700-1 3/4)	2000-2 1/4 704 (800-2 1/4)	2240-3 944 (1000-3)
	RURIQ FIX MINIMUMS				
S-LOC 17L	1680/40 393 (400-3/4)				
CIRCLING	1740-1 444 (500-1)	1760-1 464 (500-1)	1960-1 3/4 664 (700-1 3/4)	2000-2 1/4 704 (800-2 1/4)	2240-3 944 (1000-3)

MRL Rwy 13-31  
TDZ/CL Rwy 35R  
HIRL Rwys 17L-35R and 17R-35L  
REIL Rwys 13 and 31

SC-1, 31 OCT 2024 to 28 NOV 2024

SC-1, 31 OCT 2024 to 28 NOV 2024