

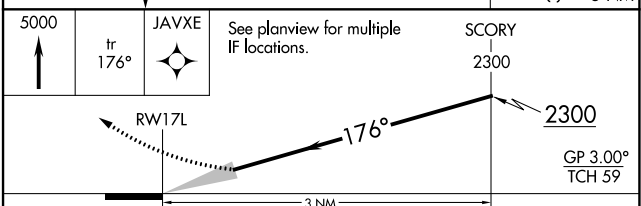
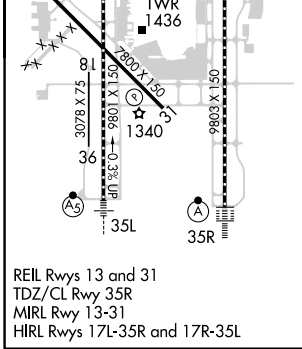
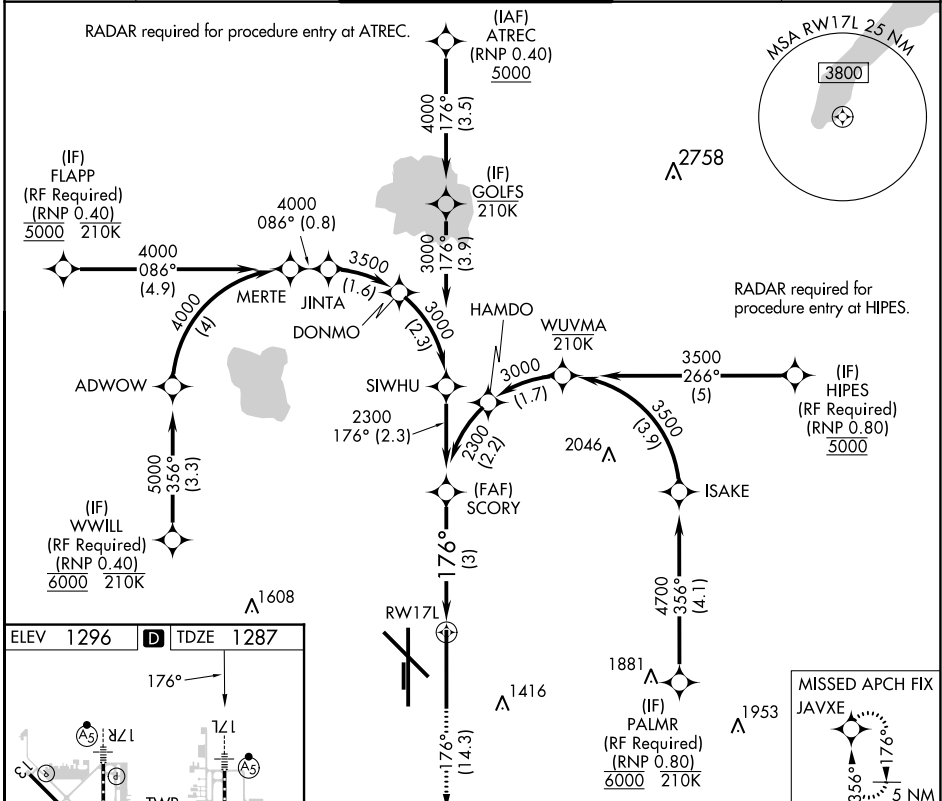
APP CRS	Rwy Idg	9802
176°	TDZE	1287
	Apt Elev	1296

RNAV (RNP) Z RWY 17L

OKC WILL ROGERS INTL (OKC)

<p>ASR For uncompensated Baro-VNAV systems, procedure NA below -12°C (11°F) or above 54°C (130°F). GPS required. Simultaneous approach authorized with Rwy 17R. Use of FD or AP providing RNAV track guidance required during simultaneous operations.</p>		<p>MISSED APPROACH: Climb to 5000 on track 176° to JAVXE and hold, continue climb-in-hold to 5000.</p>

D-ATIS 125.85	OKC CITY APP CON 124.6 266.8	ROGERS TOWER 119.35 269.45	GND CON 121.9 348.6	CLNC DEL 124.35
-------------------------	--	--------------------------------------	-------------------------------	---------------------------



CATEGORY	A	B	C	D
RNP 0.11 DA		1555/24	268 (300-½)	
RNP 0.20 DA		1643/34	356 (400-¾)	
RNP 0.30 DA		1724/49	437 (500-1)	

SC-1, 31 OCT 2024 to 28 NOV 2024

SC-1, 31 OCT 2024 to 28 NOV 2024