

# RNAV (RNP) Z RWY 35R

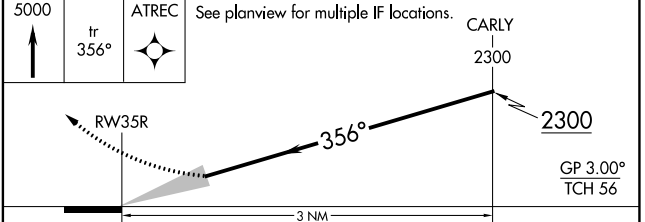
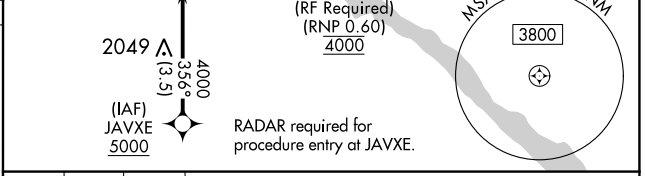
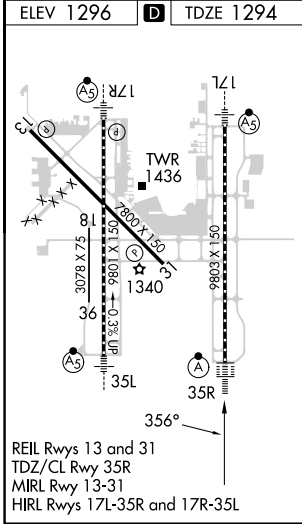
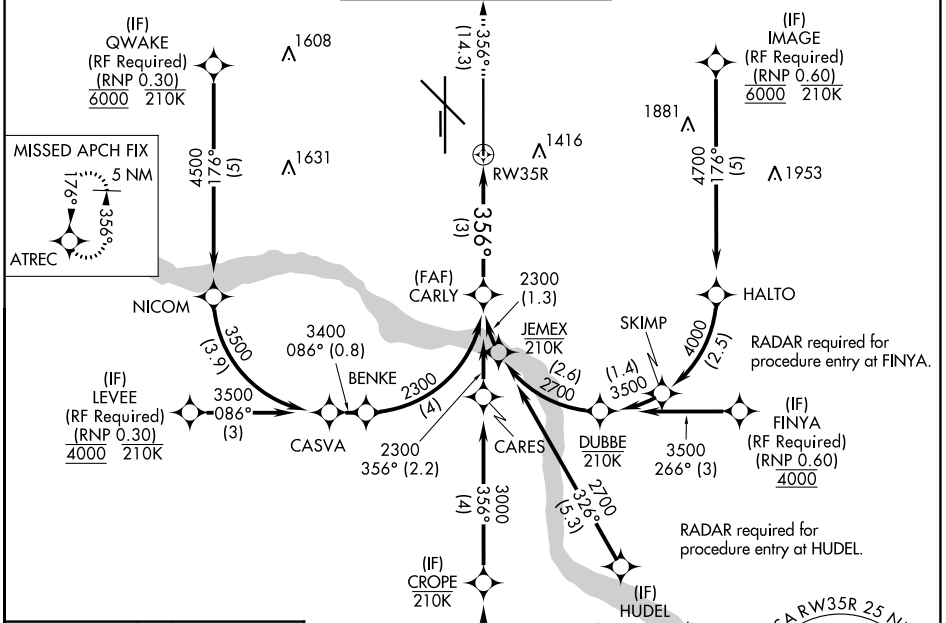
OKC WILL ROGERS INTL (OKC)

APP CRS <b>356°</b>	Rwy Idg <b>9802</b>
	TDZE <b>1294</b>
	Apt Elev <b>1296</b>

**ASR** For uncompensated Baro-VNAV systems, procedure NA below -12°C (11°F) or above 54°C (130°F). GPS required. Simultaneous approach authorized with Rwy 35L. Use of FD or AP providing RNAV track guidance required during simultaneous operations.

**ALSf-2** **MISSED APPROACH:** Climb to 5000 on track 356° to ATREC and hold, continue climb-in-hold to 5000.

D-ATIS <b>125.85</b>	OKC CITY APP CON <b>124.6 266.8</b>	ROGERS TOWER <b>119.35 269.45</b>	GND CON <b>121.9 348.6</b>	CLNC DEL <b>124.35</b>
-------------------------	--	--------------------------------------	-------------------------------	---------------------------



CATEGORY	A	B	C	D
RNP 0.16 DA		1570/24	276 (300-½)	
RNP 0.30 DA		1674/39	380 (400-¾)	

## AUTHORIZATION REQUIRED

SC-1, 31 OCT 2024 to 28 NOV 2024

SC-1, 31 OCT 2024 to 28 NOV 2024