

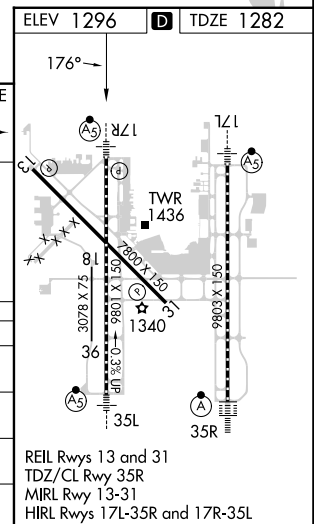
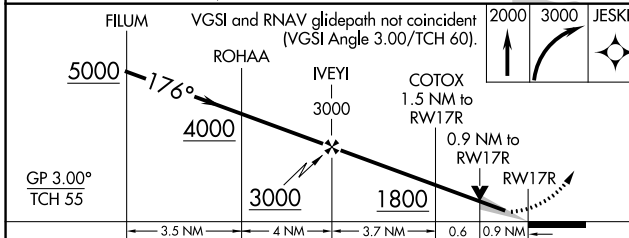
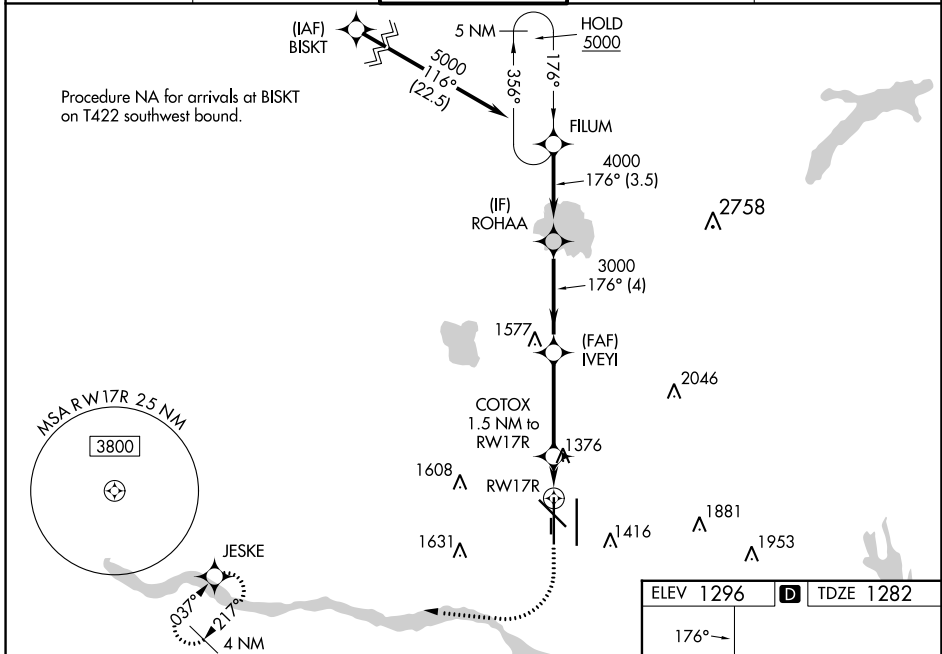
WAAS CH 50102 W17A	APP CRS 176°	Rwy Idg TDZE 1282 Apt Elev 1296	9800
--	------------------------	---	-------------

RNAV (GPS) Y RWY 17R

OKC WILL ROGERS INTL (OKC)

RNP APCH-GPS.		MALSR	MISSED APPROACH: Climb to 2000 then climbing right turn to 3000 direct JESKE and hold.
Simultaneous approach authorized. LNAV procedure NA during simultaneous operations. Use of FD or AP required during simultaneous operations. For uncompensated Baro-VNAV systems, LNAV/VNAV NA below -12°C or above 54°C. For inop ALS, increase LNAV/VNAV all Cats visibility to RVR 4500, and LNAV Cats C and D visibility to RVR 5500. * RVR 1800 authorized with use of FD or AP or HUD to DA.		ASR	

D-ATIS 125.85	OKE CITY APP CON 124.6 266.8	ROGERS TOWER 119.35 269.45	GND CON 121.9 348.6	CLNC DEL 124.35
-------------------------	--	---	-------------------------------	---------------------------



CATEGORY	A	B	C	D
LPV DA*	1482/24		200 (200-½)	
LNAV/VNAV DA	1550/24		268 (300-½)	
LNAV MDA	1640/24		1640/30	358 (400-⅝)
CIRCLING	1740-1 444 (500-1)	1760-1 464 (500-1)	1960-1¾ 664 (700-1¾)	2000-2¼ 704 (800-2¼)

SC-1, 31 OCT 2024 to 28 NOV 2024

SC-1, 31 OCT 2024 to 28 NOV 2024