

(TSDEL.TSDEL3) 24305

AL-301 (FAA)

OKC WILL ROGERS INTL (OKC)
OKLAHOMA CITY, OKLAHOMA

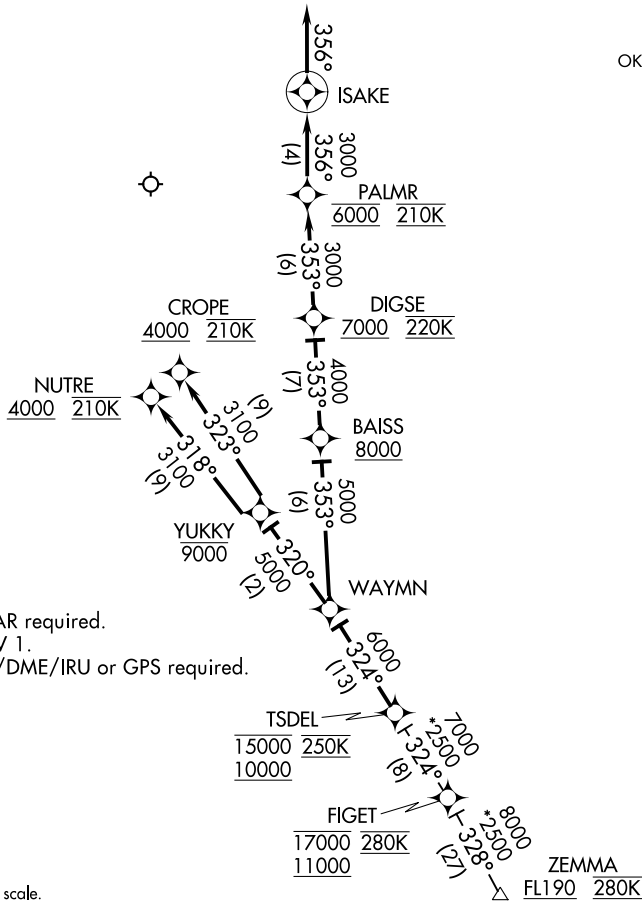
TSDEL THREE ARRIVAL (RNAV)

D-ATIS

125.85

OKC CITY APP CON

124.2 336.4



NOTE: RADAR required.
 NOTE: RNAV 1.
 NOTE: DME/DME/IRU or GPS required.

NOTE: Chart not to scale.

ARRIVAL ROUTE DESCRIPTION

FIGET TRANSITION (FIGET.TSDEL3)
ZEMMA TRANSITION (ZEMMA.TSDEL3)

From TSDEL on track 324° to WAYMN.

LANDING RWYS 17L/R: From WAYMN on track 353° to cross BAISS at or above 8000, then on track 353° to cross DIGSE at or above 7000 and at 220K, then on track 353° to cross PALMR at 6000 and at 210K, then on track 356° to ISAKE, then on track 356°. Expect RADAR vectors to final approach course.

LANDING RWY 35L: From WAYMN on track 320° to cross YUKKY at or below 9000, then on track 318° to cross NUTRE at or above 4000 and at 210K. Expect RNAV (RNP) approach.

LANDING RWY 35R: From WAYMN on track 320° to cross YUKKY at or below 9000, then on track 323° to cross CROPE at or above 4000 and at 210K. Expect RNAV (RNP) approach.

TSDEL THREE ARRIVAL (RNAV)

(TSDEL.TSDEL3) 07DEC17

OKLAHOMA CITY, OKLAHOMA
OKC WILL ROGERS INTL (OKC)

SC-1, 31 OCT 2024 to 28 NOV 2024

SC-1, 31 OCT 2024 to 28 NOV 2024