

(TOLLZ2.TOLLZ) 24081

AL-305 (FAA)

EXEC (ORL)
ORLANDO, FLORIDA

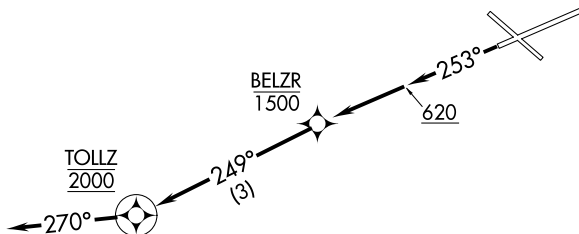
TOLLZ TWO DEPARTURE (RNAV)

ORLANDO DEP CON
119.4 351.9
ATIS
127.25
CLNC DEL
128.45
GND CON
121.4 239.0
EXECUTIVE TOWER ★
118.7 239.0

RNAV 1 - DME/DME/IRU or GPS required.

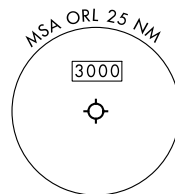
RADAR required.

**TOP ALTITUDE:
2000**



TAKEOFF MINIMUMS

Rwy 25: Standard with minimum climb of 500' per NM to 620.



NOTE: Chart not to scale.



DEPARTURE ROUTE DESCRIPTION

TAKEOFF RUNWAY 25: Climb on heading 253° to 620, then direct to cross BELZR at or below 1500, then on track 249° to cross TOLLZ at 2000, thence. . . .

. . . on heading 270°, maintain 2000. Expect clearance to filed altitude within 10 minutes after departure.

TOLLZ TWO DEPARTURE (RNAV)

(TOLLZ2.TOLLZ) 21MAR24

ORLANDO, FLORIDA
EXEC (ORL)

SE-3, 31 OCT 2024 to 28 NOV 2024

SE-3, 31 OCT 2024 to 28 NOV 2024