

PATUXENT RIVER, MARYLAND

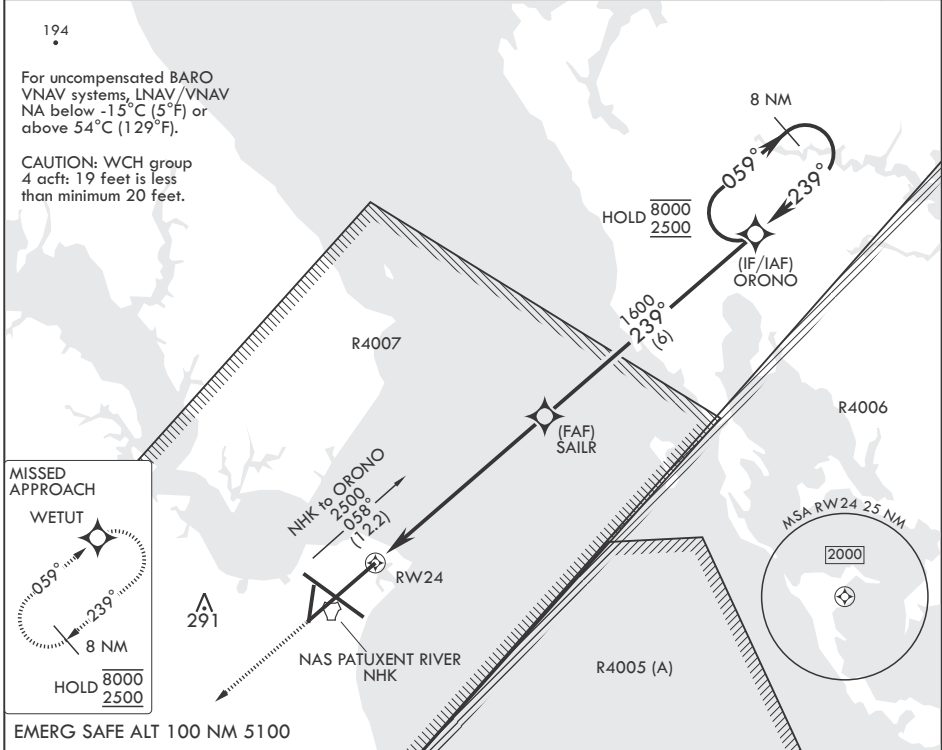
RNAV (GPS) RWY 24

APCH CRS	Rwy Idg	11,799
239°	TDZE	20
	Arprt Elev	39

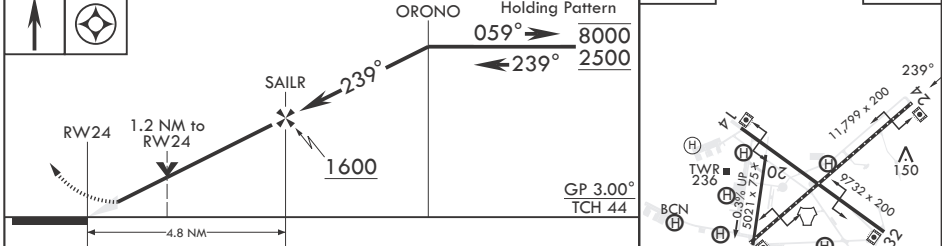
- (USN) PATUXENT RIVER NAS (TRAPNELL FLD) (KNHK)

RNP APCH	MISSED APPROACH: Climb to 2500 direct WETUT and hold.
----------	---

ATIS	APP CON/DEP CON*	TOWER	GND CON	CLNC DEL	ASR/PAR
322.425	121.0 250.3	123.7 343.65	120.6 336.4	135.2 316.125	



2500 WETUT	ORONO	8 NM Holding Pattern	ELEV 39	TDZE 20
------------	-------	----------------------	---------	---------



CATEGORY	A	B	C	D	E
LNAV/VNAV DA	308-7/8 288 (300-7/8)	319-7/8 299 (300-7/8)	327-7/8 307 (300-7/8)	338-7/8	318 (300-7/8)
LNAV MDA	440-1	420 (500-1)	440-1 1/2	420	(500-1 1/2)
C CIRCLING	540-1 501 (600-1)	560-1 521 (600-1)	620-1 1/2 581 (600-1 1/2)	680-2 641 (700-2)	820-2 3/4 781 (800-2 3/4)

HIRL Rwsy 6-24, 14-32
TDZL/CL Rwy 6

PATUXENT RIVER, MARYLAND 38°17'N - 76°25'W PATUXENT RIVER NAS (TRAPNELL FLD) (KNHK)

RNAV (GPS) RWY 24

Amdt 3 07SEP23

NE-3, 31 OCT 2024 to 28 NOV 2024

NE-3, 31 OCT 2024 to 28 NOV 2024