

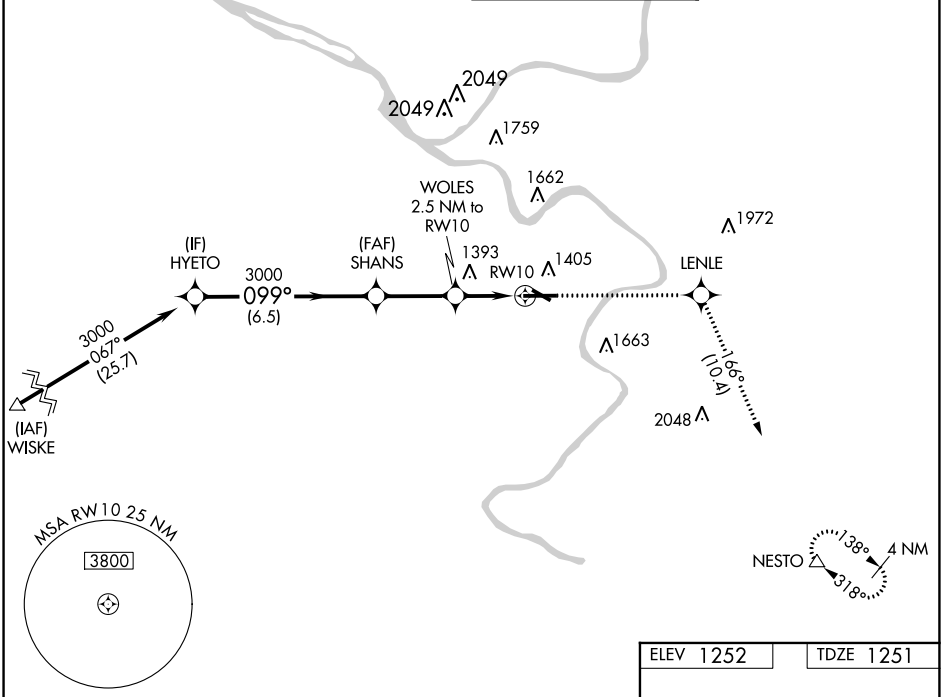
WAAS CH 97325 W10A	APP CRS 099°	Rwy Idg TDZE Apt Elev	6501 1251 1252
--	------------------------	-----------------------------	---

RNAV (GPS) RWY 10

ALLEGHENY COUNTY (AGC)

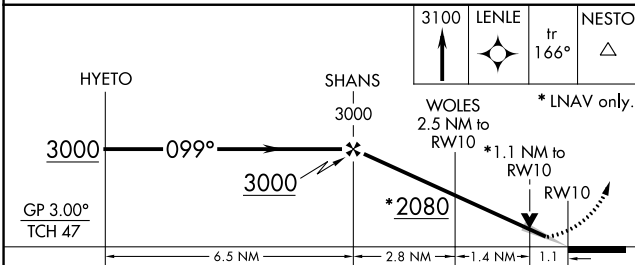
RNP APCH - GPS.	MISSED APPROACH: Climb to 3100 direct LENLE and on track 166° to NESTO and hold.
▽ For uncompensated Baro-VNAV systems, LNAV/VNAV NA below -16°C or above 54°C. Circling Rwy 13 NA at night.	

ATIS 120.55	PITTSBURGH APP CON 119.35 285.575	ALLEGHENY TOWER 121.1 239.0	GND CON 121.7
-----------------------	---	---------------------------------------	-------------------------

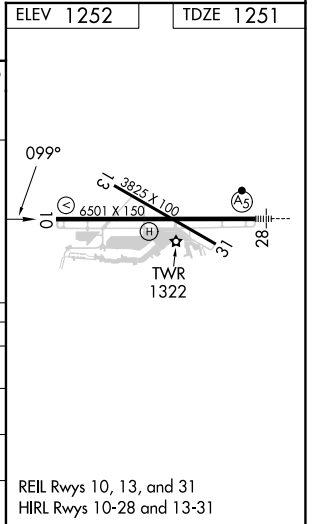


NE-4, 31 OCT 2024 to 28 NOV 2024

NE-4, 31 OCT 2024 to 28 NOV 2024



CATEGORY	A	B	C	D
LPV DA		1451-3/4	200 (200-3/4)	
LNAV/VNAV DA		1554-1	303 (400-1)	
LNAV MDA	1660-1	409 (500-1)	1660-1 1/8	409 (500-1 1/8)
C CIRCLING	1720-1	468 (500-1)	1980-2 728 (800-2)	1980-2 1/4 728 (800-2 1/4)



REIL Rwy 10, 13, and 31
HIRL Rwy 10-28 and 13-31