

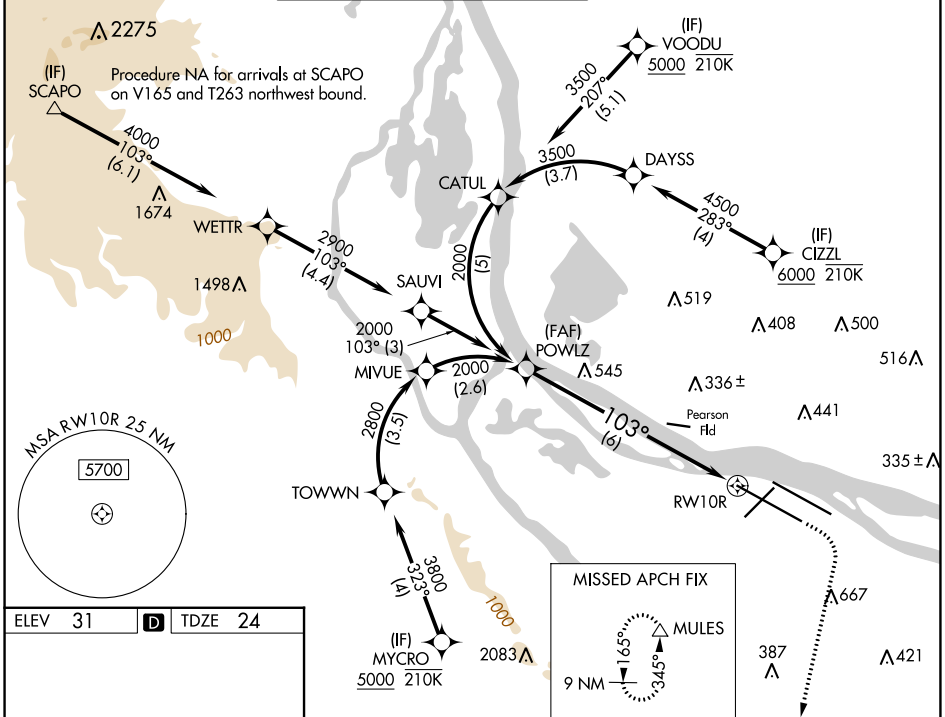
APP CRS	Rwy Idg	11000
103°	TDZE	24
	Apt Elev	31

RNAV (RNP) Z RWY 10R

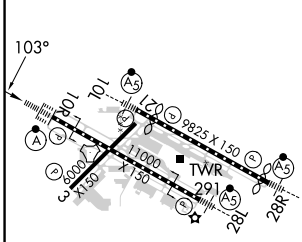
PORTLAND INTL (PDX)

RNP AR APCH - GPS. Authorization required. From DAYSS, CATUL, or TOWNN: RF.	ALSF-2	MISSED APPROACH: Climb to 440 then climbing right turn to 5000 direct MULES and hold, continue climb-in-hold to 5000.
▼ For uncompensated Baro-VNAV systems, procedure NA below -5°C or above 54°C. Simultaneous approach authorized. For inop ALS, increase RNP 0.18 all Cats visibility to RVR 4500, increase RNP 0.30 all Cats visibility to RVR 5500.		

D-ATIS	PORTLAND APP CON	PORTLAND TOWER	GND CON	CLNC DEL	CPDLC
128.35	124.35 299.2	Rwy 10L-28R 118.7 257.8	Rwys 3-21, 10R-28L 123.775 251.125	121.9 348.6	120.125 318.1



ELEV 31	D	TDZE 24
---------	----------	---------



VGSi and RNAV glidepath not coincident (VGSi Angle 3.00/TCH 71).			
440	5000	MULES	
See planview for multiple IF locations.			
6 NM			

CATEGORY	A	B	C	D
RNP 0.18 DA		324/24	300 (300-½)	
RNP 0.30 DA		397/35	373 (400-¾)	
AUTHORIZATION REQUIRED				

REIL Rwys 3 and 21
 TDZ/CL Rwy 10R
 MIRL Rwy 3-21
 HIRL Rwys 10L-28R and 10R-28L

NW-1, 31 OCT 2024 to 28 NOV 2024

NW-1, 31 OCT 2024 to 28 NOV 2024