


APP CRS	Rwy Idg	<b>9290</b>
<b>283°</b>	TDZE	<b>31</b>
	Apt Elev	<b>31</b>

# RNAV (RNP) Z RWY 28R

PORTLAND INTL (PDX)

RNP AR APCH - GPS. Authorization required. From BYKES: RF

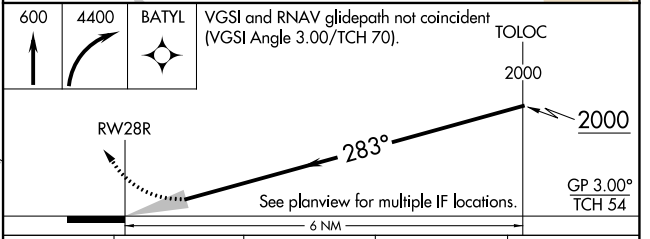
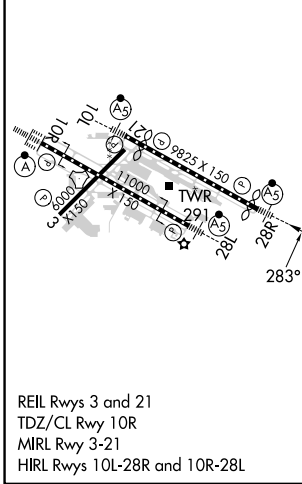
▼ For uncompensated Baro-VNAV systems, procedure NA below -5°C or above 54°C. Simultaneous approach authorized. For inop ALS increase RNP 0.10 all Cats visibility to RVR 4500, increase RNP 0.20 all Cats visibility to RVR 5500, and increase RNP 0.30 all Cats visibility to RVR 6000.

MALSR  MISSED APPROACH: Climb to 600 then climbing right turn to 4400 direct BATYL and hold, continue climb-in-hold to 4400.

D-ATIS	PORTLAND APP CON	PORTLAND TOWER	GND CON	CLNC DEL	CPDLC
<b>128.35</b>	<b>124.35 299.2</b>	Rwy 10L-28R	<b>121.9 348.6</b>	<b>120.125 318.1</b>	
<b>269.9</b>		Rwys 3-21, 10R-28L			



ELEV	31	<b>D</b>	TDZE	31
------	----	----------	------	----



CATEGORY	A	B	C	D
RNP 0.10 DA		322/24	291 (300-½)	
RNP 0.20 DA		400/35	369 (400-¾)	
RNP 0.30 DA		451/40	420 (500-¾)	

**AUTHORIZATION REQUIRED**

NW-1, 31 OCT 2024 to 28 NOV 2024

NW-1, 31 OCT 2024 to 28 NOV 2024