


WAAS CH 60905 W28A	APP CRS 283°	Rwy Idg TDZE Apt Elev	9290 31 31
--	------------------------	-----------------------------	---------------------------------------

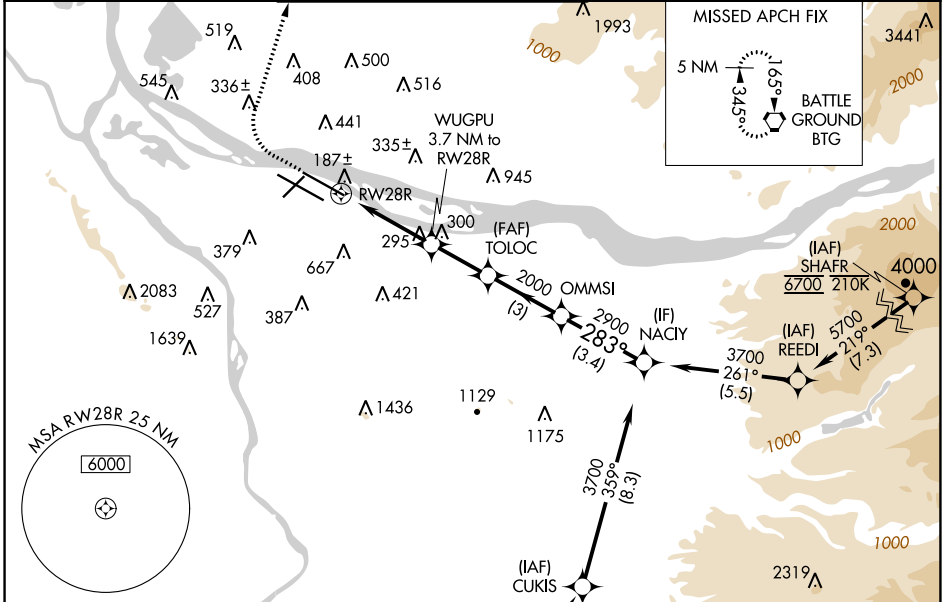
RNAV (GPS) X RWY 28R

PORTLAND INTL (PDX)

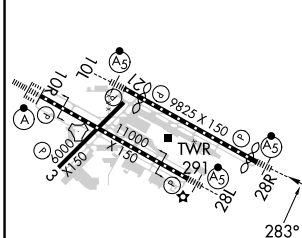
⚠ For uncompensated Baro-VNAV systems, LNAV/VNAV NA below -6°C (22°F) or above 54°C (130°F). Simultaneous approach authorized. LNAV procedure NA during simultaneous operations. DME/DME RNP-0.3 NA. Use of FD or AP providing RNAV track guidance required during simultaneous operations. For inop ALS increase LNAV Cat C/D visibility to RVR 6000.




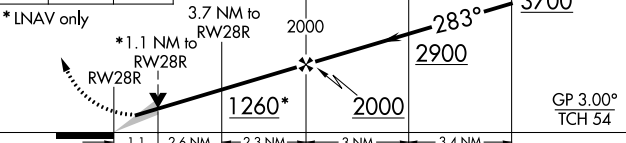
MALSR
 MISSED APPROACH: Climb to 600 then climbing right turn to 4200 direct BTG VORTAC and hold, continue climb-in-hold to 4200.

D-ATIS 128.35 269.9	PORTLAND APP CON 124.35 299.2	PORTLAND TOWER Rwy 10L-28R 118.7 257.8	Rwys 3-21, 10R-28L 123.775 251.125	GND CON 121.9 348.6	CLNC DEL 120.125 318.1	CPDLC
---	---	---	--	-------------------------------	----------------------------------	-------



ELEV 31	D	TDZE 31
---------	----------	---------



600	4200	BTG	VGSI and RNAV glidepath not coincident (VGSI Angle 3.00/TCH 70).	NACIY
			WUGPU 3.7 NM to RWY28R	TOLOC 2000
*LNAV only		*1.1 NM to RWY28R	283°	3700
				
1.1	2.6 NM	2.3 NM	3 NM	3.4 NM

CATEGORY	A	B	C	D
LPV DA		281/24	250 (300-½)	
LNAV/VNAV DA		446/45	415 (500-¾)	
LNAV MDA	440/24	409 (500-½)	440/40	409 (500-¾)
C CIRCLING	720-1 689 (700-1)	760-1 729 (800-1)	1060-3	1029 (1100-3)

REIL Rwys 3 and 21
TDZ/CL Rwy 10R
MIRL Rwy 3-21
HIRL Rwys 10L-28R and 10R-28L

NW-1, 31 OCT 2024 to 28 NOV 2024

NW-1, 31 OCT 2024 to 28 NOV 2024