

(BUFY4.BUFYI) 24305

ROANOKE/BLACKSBURG RGNL (WOODRUM FLD) (R.O.A)

# BUFYI FOUR DEPARTURE (RNAV)

AL-349 (FAA)

ROANOKE, VIRGINIA

ATIS 132.375

CLNC DEL

119.7

GND CON

121.9 257.8

ROANOKE DEP CON

126.9 339.8

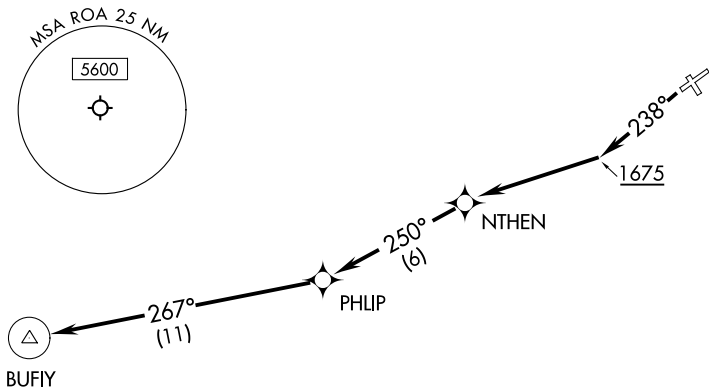
ROANOKE TOWER

118.3 257.8

RNAV 1 - DME/DME/IRU or GPS required.

RADAR required for non-GPS equipped aircraft.

**TOP ALTITUDE:  
5000**



### TAKEOFF MINIMUMS:

Rwys 6, 16, 34: NA-Air Traffic.

Rwy 24: Standard with minimum climb  
of 500' per NM to 1675.

NOTE: Chart not to scale.



### DEPARTURE ROUTE DESCRIPTION

**TAKEOFF RUNWAY 24:** Climb on heading 238° to 1675, then direct NTHEN, then on track 250° to PHLIP, then on track 267° to BUFYI, thence...

...maintain 5000, expect filed altitude within 10 minutes after departure.

# BUFYI FOUR DEPARTURE (RNAV)

(BUFY4.BUFYI) 31OCT24

ROANOKE, VIRGINIA

ROANOKE/BLACKSBURG RGNL (WOODRUM FLD) (R.O.A)

NE-3, 31 OCT 2024 to 28 NOV 2024

NE-3, 31 OCT 2024 to 28 NOV 2024