

APP CRS	Rwy Idg	<b>6010</b>
<b>238°</b>	TDZE	<b>1170</b>
	Apt Elev	<b>1175</b>

# RNAV (RNP) Z RWY 24

ROANOKE/BLACKSBURG RGNL (WOODRUM FLD) (R.O.A)

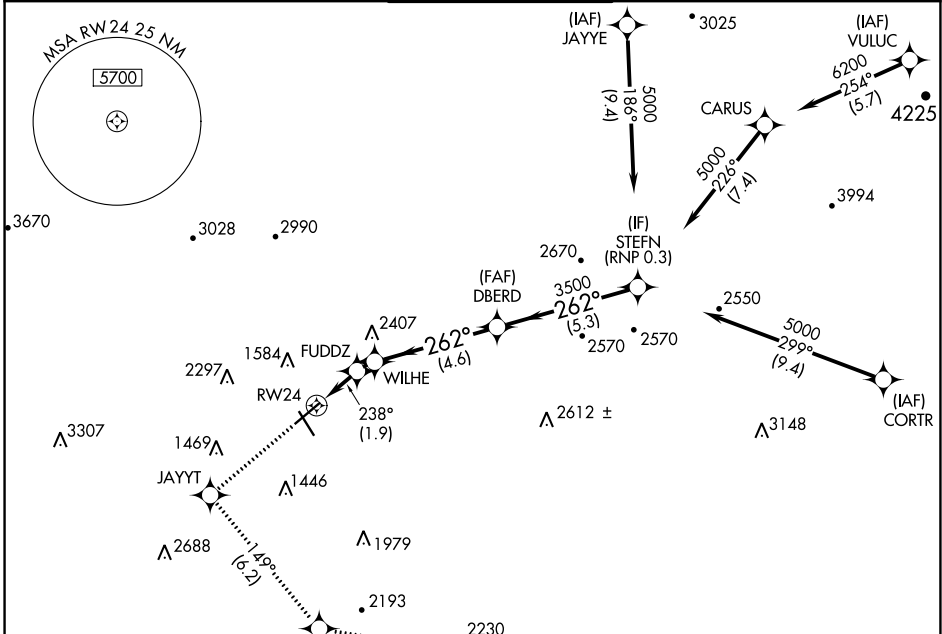
RNP AR APCH - GPS.

▼ For uncompensated Baro-VNAV systems, procedure NA below -14°C or above 54°C.

⚠ -13°C

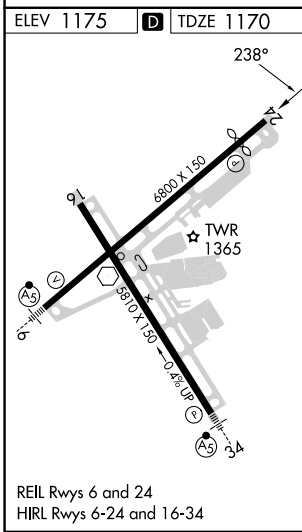
MISSED APPROACH: Climb to 4000 direct JAYYT and on track 149° to TPUCK and on track 107° to MONAT and hold. # Missed approach requires minimum climb of 230 feet per NM to 3200.

ATIS	ROANOKE APP CON	ROANOKE TOWER	GND CON	CLNC DEL
<b>132.375</b>	<b>126.9 339.8</b>	<b>118.3 257.8</b>	<b>121.9 257.8</b>	<b>119.7</b>



NE-3, 31 OCT 2024 to 28 NOV 2024

NE-3, 31 OCT 2024 to 28 NOV 2024



4000	JAYYT	tr 149°	TPUCK	tr 107°	MONAT
	FUDDZ	1815	WILHE	2045	3500
CATEGORY	A	B	C	D	
# RNP 0.15 DA		1491-1	321 (400-1)		
RNP 0.30 DA		1633-1½	463 (500-1½)		
<b>AUTHORIZATION REQUIRED</b>					