

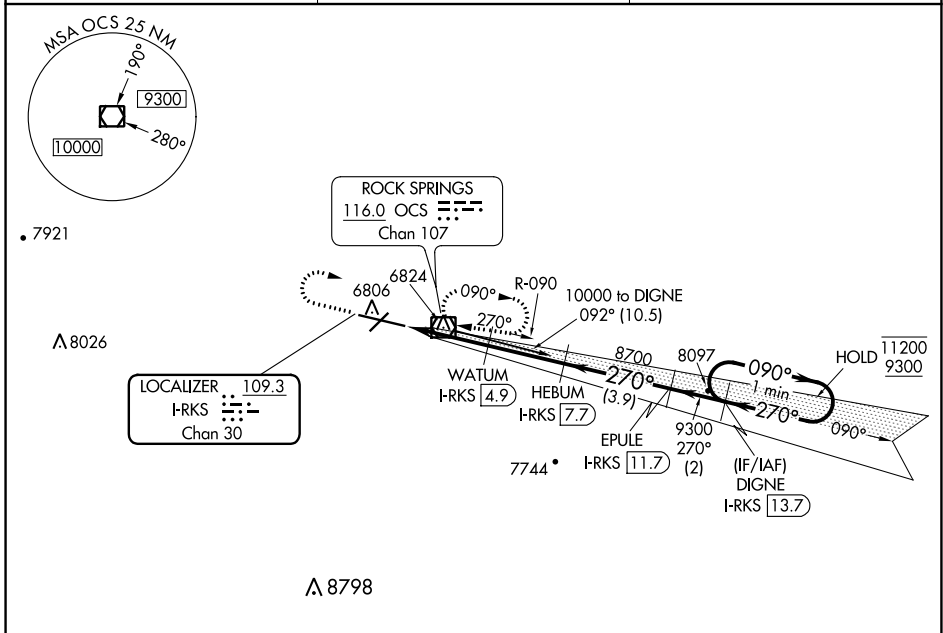
LOC/DME I-RKS <b>109.3</b> Chan 30	APP CRS <b>270°</b>	Rwy Idg TDZE Apt Elev	<b>10000</b> <b>6765</b> <b>6765</b>
--	------------------------	-----------------------------	--

# ILS or LOC RWY 27

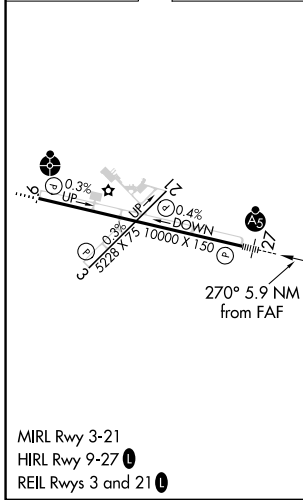
SOUTHWEST WYOMING RGNL (R.KS)

DME required.	MALSR	MISSED APPROACH: Climb to 7600 then climbing right turn to 9300 direct OCS VOR/DME and hold, continue climb-in-hold to 9300.
---------------	-------	--

ASOS <b>118.375</b>	SALT LAKE CENTER <b>124.35 353.5</b>	UNICOM <b>122.8 (CTAF) 0</b>
------------------------	---	---------------------------------



ELEV 6765	<b>D</b>	TDZE 6765
-----------	----------	-----------



7600	9300	OCS	Use I-RKS DME when on the localizer course.	
*LOC only.	HEBUM I-RKS 7.7	EPULE I-RKS 11.7	DIGNE I-RKS 13.7	One Minute Holding Pattern
WATUM I-RKS 4.9	8700	9300	11200	GS 3.00° TCH 55
I-RKS 1.8	I-RKS 2.7	8700	9300	
0.9	2.2 NM	2.8 NM	3.9 NM	2 NM
CATEGORY	A	B	C	D
S-ILS-27	6965-1/2		200 (200-1/2)	
S-LOC 27	7100-1/2		335 (400-1/2)	
<b>C</b> CIRCLING	7140-1 375 (400-1)	7220-1 455 (500-1)	7220-1 1/2 455 (500-1 1/2)	7540-2 1/2 775 (800-2 1/2)

NW-1, 31 OCT 2024 to 28 NOV 2024

NW-1, 31 OCT 2024 to 28 NOV 2024