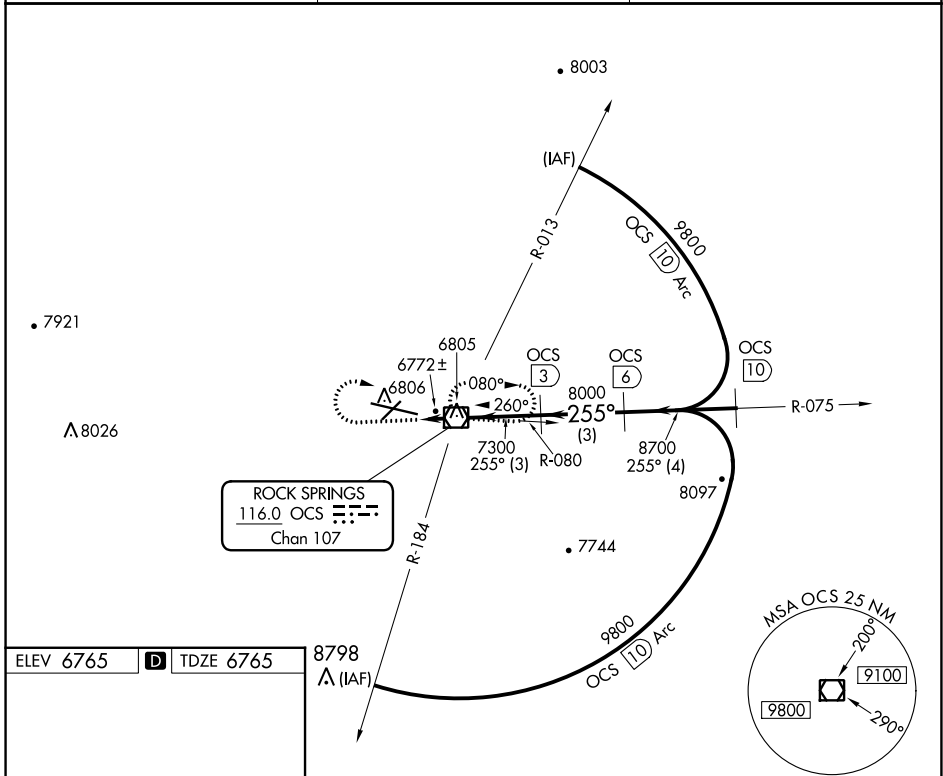


VOR/DME OCS <b>116.0</b> Chan <b>107</b>	APP CRS <b>255°</b>	Rwy Idg TDZE Apt Elev	<b>10000</b> <b>6765</b> <b>6765</b>
--	------------------------	-----------------------------	--

# VOR/DME RWY 27

SOUTHWEST WYOMING RGNL (R.K.S)

<p><b>▼</b> Inoperative table does not apply to Cat D.</p>		<p>MALS R</p>	<p>MISSED APPROACH: Climb to 7700, then climbing right turn to 9100 direct OCS VOR/DME and hold.</p>
ASOS <b>118.375</b>	SALT LAKE CENTER <b>124.35 353.5</b>	UNICOM <b>122.8 (CTAF) ①</b>	



ELEV 6765 **D** TDZE 6765

8798 **△** (IAF)

255° 1.4 NM from FAF

MIRL Rwy 3-21  
HIRL Rwy 9-27 **①**  
REIL Rwy 3 and 21 **①**

	7700	9100	OCS				
	↑	↷	◻				
			OCS VOR/DME	OCS 3	OCS 6	OCS 10	OCS 10
			7300	8000	8700	9800	9800
			1.4 NM	3 NM	3 NM	4 NM	Procedure Turn NA
CATEGORY	A		B		C		D
S-27	7040-½ 275 (300-½)						7040-1 275 (300-1)
<b>C</b> CIRCLING	7140-1 375 (400-1)	7220-1 455 (500-1)	7220-1½ 455 (500-1½)				NA

NW-1, 31 OCT 2024 to 28 NOV 2024

NW-1, 31 OCT 2024 to 28 NOV 2024