

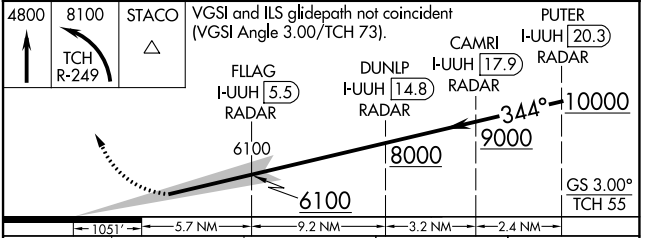
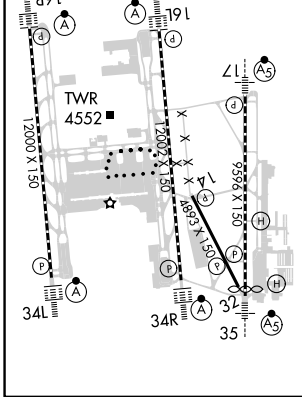
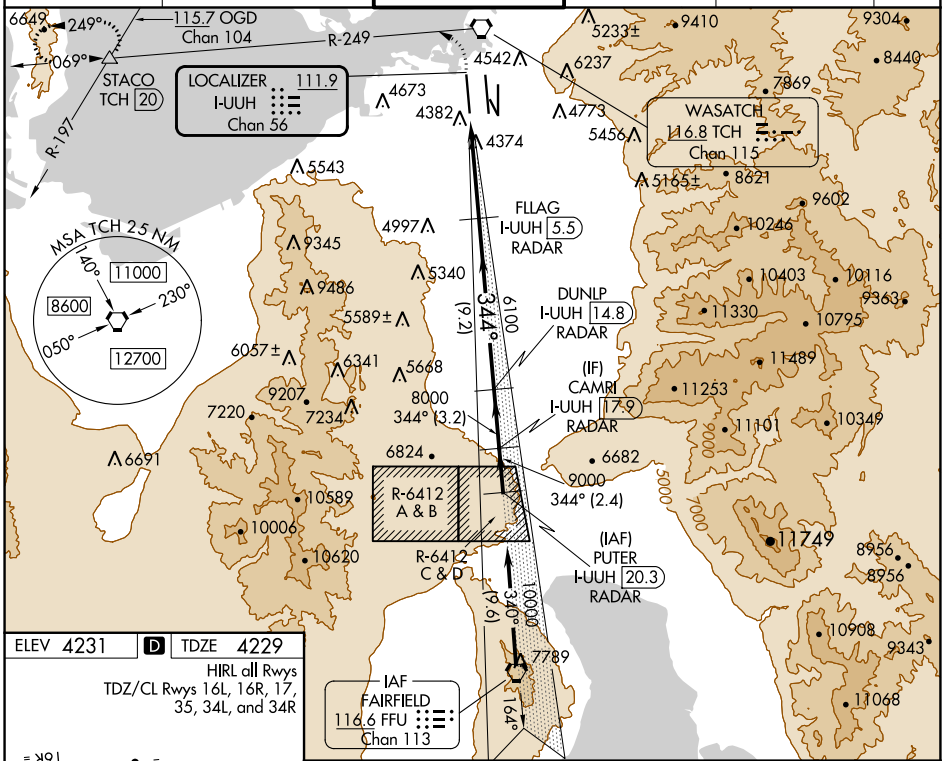
LOC/DME I-UUH <b>111.9</b> Chan 56	APP CRS <b>344°</b>	Rwy ldg TDZE <b>12000</b> <b>4229</b> Apt Elev <b>4231</b>
--	------------------------	--

# ILS RWY 34L (CAT II & III)

SALT LAKE CITY INTL (SLC)

RADAR required for arrivals at PUTER. DME or RADAR required.	ALSF-2 A	MISSED APPROACH: Climb to 4800 then climbing left turn to 8100 on TCH VORTAC R-249 to STACO INT/TCH 20 DME and hold.
--	-------------	--

D-ATIS <b>124.75</b>	SALT LAKE CITY APP CON <b>125.7</b>	SALT LAKE CITY TOWER <b>132.65</b>	GND CON <b>123.775</b>	CLNC DEL <b>127.3</b>	CPDLC
-------------------------	--	---------------------------------------	---------------------------	--------------------------	-------



CATEGORY	A	B	C	D
S-ILS 34L	CAT II RA 102/12 100 DA 4329			
S-ILS 34L	CAT III RVR 03			

**CATEGORY II & III ILS - SPECIAL AIRCREW & AIRCRAFT CERTIFICATION REQUIRED**

SW-4, 31 OCT 2024 to 28 NOV 2024

SW-4, 31 OCT 2024 to 28 NOV 2024