

SALT LAKE CITY, UTAH

AL-365 (FAA)

24305

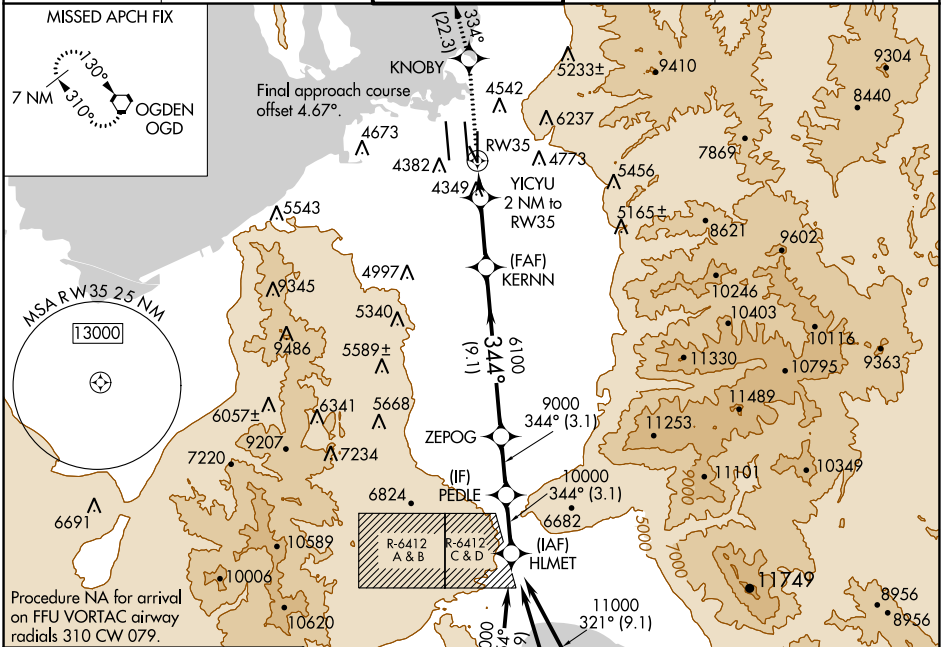
WAAS CH 42843 W35A	APP CRS 344°	Rwy Idg TDZE Apt Elev	9272 4227 4231
--	------------------------	-----------------------------	---

RNAV (GPS) RWY 35

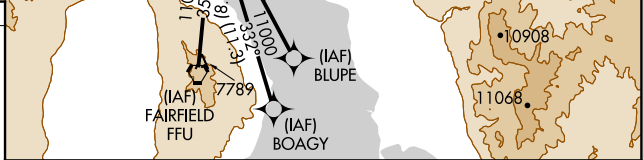
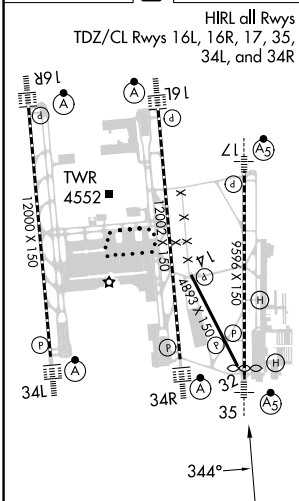
SALT LAKE CITY INTL (SLC)

RNP APCH - GPS. ▼ For inop ALS, increase LP Cat C, D and E visibility to RVR 5500, increase LNAV Cat E visibility to 1½ SM.	MALSR 	MISSED APPROACH: Climb to 9000 direct KNOBY and on track 334° to OGD VORTAC and hold.
--	-----------	---

D-ATIS 124.75 125.625	SALT LAKE CITY APP CON 125.7 284.6	SALT LAKE CITY TOWER 118.3 257.8	GND CON 121.9 348.6	CLNC DEL 127.3 379.975	CPDLC
---------------------------------	--	--	-------------------------------	----------------------------------	-------



ELEV 4231	D	TDZE 4227
------------------	----------	------------------



VGSI and descent angles not coincident (VGSI Angle 3.00/TCH 74).

9000	KNOBY	tr 334°	OGD	HLMET		
				KERNN	ZEPOG	PEDLE
				YICYU 2 NM to RW35		
				0.9 NM to RW35	3.00° TCH 55	
				RW35	9000	11000
				4900	6100	
				0.9	1.1	3.7
				9.1	3.1	3.1
				NM		

CATEGORY		A	B	C	D	E
LP	MDA	4600/24	373 (400-½)	4600/35	373 (400-¾)	
LNAV	MDA	4760/24	533 (600-½)	4760/55	533 (600-1)	

SALT LAKE CITY, UTAH
Amdt 3B 19MAY22

40°47'N-111°59'W

SALT LAKE CITY INTL (SLC)
RNAV (GPS) RWY 35

SW-4, 31 OCT 2024 to 28 NOV 2024

SW-4, 31 OCT 2024 to 28 NOV 2024