

(PADRZ2.PADRZ) 17341

PADRZ TWO DEPARTURE (RNAV)

AL-373 (FAA)

SAN DIEGO INTL (SAN)
SAN DIEGO, CALIFORNIA

D-ATIS
134.8
CLNC DEL
125.9
CPDLC
GND CON
123.9
LINDBERGH TOWER
118.3 338.225
SOCAL DEP CON
119.6 363.1



DEPARTURE ROUTE DESCRIPTION

TAKEOFF RUNWAY 27: Climb heading 275° to 520, then right turn direct WNFLD, then on track 296° to KERNL, then on track 296° to cross GYWNN at or above 8000, then on track 308° to PADRZ, thence. . . .

. . . .on (transition). Maintain 15000. Expect higher altitude 10 minutes after departure.

CHKNN TRANSITION (PADRZ2.CHKNN)

DINTY TRANSITION (PADRZ2.DINTY)

IKAYE TRANSITION (PADRZ2.IKAYE)

MALIT TRANSITION (PADRZ2.MALIT)

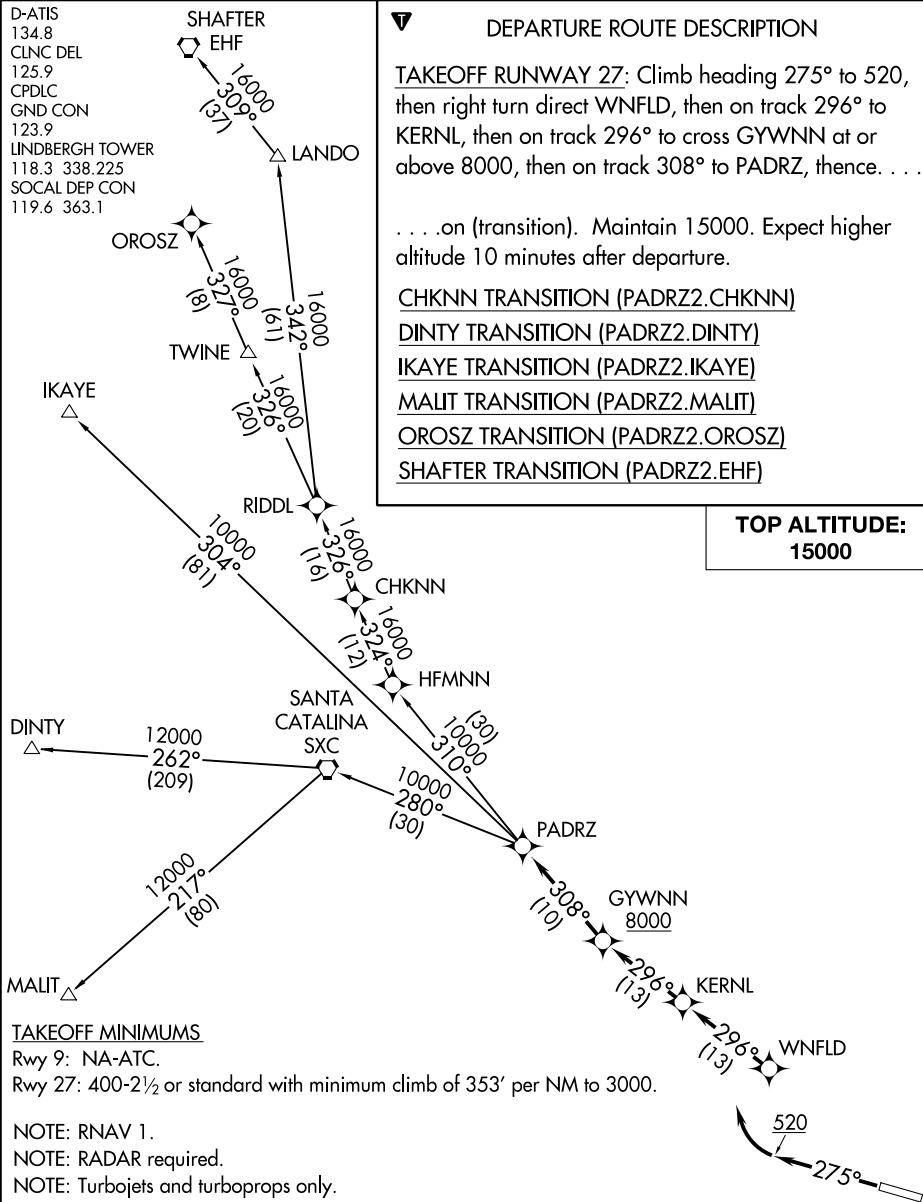
OROSZ TRANSITION (PADRZ2.ORSZ)

SHAFTER TRANSITION (PADRZ2.EHF)

**TOP ALTITUDE:
15000**

SW-3, 31 OCT 2024 to 28 NOV 2024

SW-3, 31 OCT 2024 to 28 NOV 2024



TAKEOFF MINIMUMS

Rwy 9: NA-ATC.

Rwy 27: 400-2½ or standard with minimum climb of 353' per NM to 3000.

NOTE: RNAV 1.

NOTE: RADAR required.

NOTE: Turbojets and turboprops only.

NOTE: CHKNN, SHAFTER, IKAYE, OROSZ TRANSITIONS: DME/DME/IRU or GPS required.

NOTE: DINTY, MALIT TRANSITIONS: GPS only.

NOTE: For non-GPS equipped aircraft, Oceanside (OCN) must be operational.

NOTE: DINTY TRANSITION ATC assigned only.

NOTE: DINTY and MALIT TRANSITIONS NA from SEE, SDM and RNM airports.

NOTE: Chart not to scale.

PADRZ TWO DEPARTURE (RNAV)

(PADRZ2.PADRZ) 07DEC17

SAN DIEGO, CALIFORNIA
SAN DIEGO INTL (SAN)