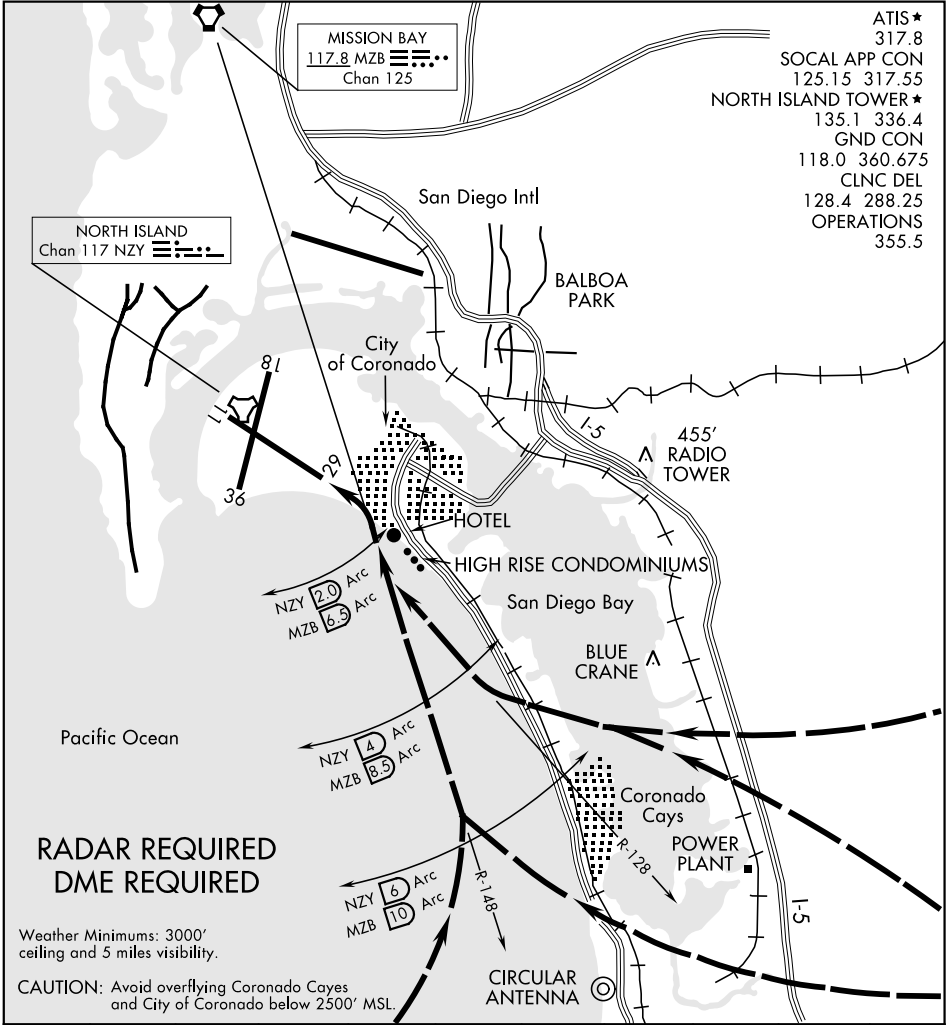


# HOTEL VISUAL RWY 29

AL-374 [USN]

NORTH ISLAND NAS (HALSEY FIELD) (KNZY)

SAN DIEGO, CALIFORNIA



- ATIS★ 317.8
- SOCAL APP CON 125.15 317.55
- NORTH ISLAND TOWER★ 135.1 336.4
- GND CON 118.0 360.675
- CLNC DEL 128.4 288.25
- OPERATIONS 355.5

SW-3, 31 OCT 2024 to 28 NOV 2024

SW-3, 31 OCT 2024 to 28 NOV 2024

1	2	3	4	5	6	7	8	9	10
---	---	---	---	---	---	---	---	---	----

**HOTEL VISUAL RWY 29**

Aircraft avoid overflying Coronado Cays and City of Coronado below 2500' MSL. Proceed visually via the NZY R-128 or MZB R-148 until reaching NZY 2 DME / MZB 6.5 DME, then maneuver to runway centerline for straight-in Runway 29.

# HOTEL VISUAL RWY 29

32°42'N-117°13'W

SAN DIEGO, CALIFORNIA

NORTH ISLAND NAS (HALSEY FIELD) (KNZY)