

LOC/DME I-SAN 111.55 Chan 52(Y)	APCH CRS 095°	Rwy Idg THRE Arprt Elev N/A N/A 26	[USN]	NORTH ISLAND NAS (HALSEY FIELD) (KNZY)
---	-------------------------	--	-------	--

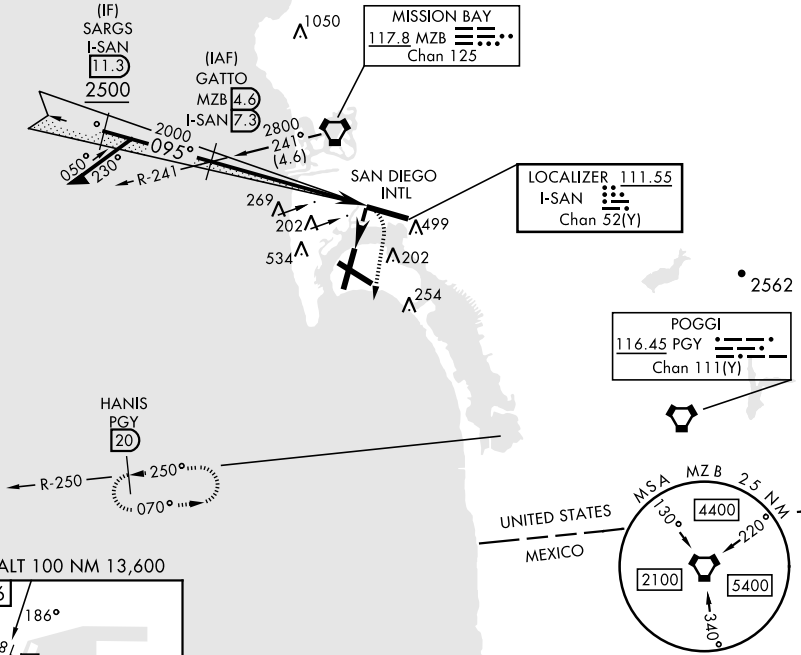
RADAR required at SARGs.

CAUTION: Maneuvering for circling approach not authorized W of Rwy 18-36 centerline. Approach authorized for Rwy 18 or left downwind approach to Rwy 29 after flying down Rwy 18.

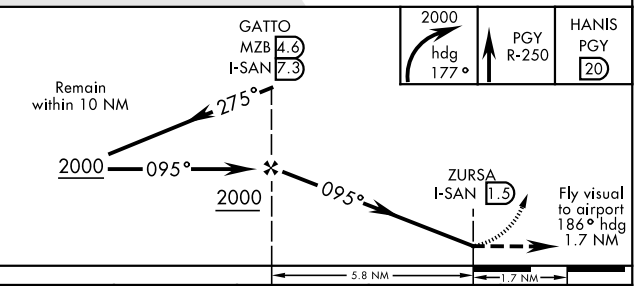
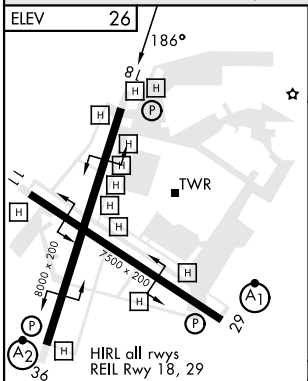
MISSED APPROACH: Climb and maintain 2000 via hdg 177°, intercept PGY VORTAC R-250 to HANIS and hold.

ATIS ★ 317.8	SOCAL APP CON 125.15 317.55	NORTH ISLAND TOWER ★ 135.1 336.4	LINDBERGH TOWER 118.3 338.225	GND CON 118.0 360.675	CLNC DEL 128.4 288.25	PAR/ASR
------------------------	---------------------------------------	--	---	---------------------------------	---------------------------------	---------

CAUTION: Aircraft executing missed approach after beginning circling maneuver do not return to missed approach point.



EMERG SAFE ALT 100 NM 13,600



FAF to MAP 5.8 NM						CATEGORY	A	B	C	D
Knots	60	90	120	150	180	CIRCLING*	860-2	834 (900-2)	880-2½ 854 (900-2½)	880-2¾ 854 (900-2¾)
Min:Sec	5:48	3:52	2:54	2:19	1:52					

SW-3, 31 OCT 2024 to 28 NOV 2024

SW-3, 31 OCT 2024 to 28 NOV 2024