

TACAN RWY 29

TACAN NZY Chan 117	APCH CRS 299°	Rwy Ldg TDZE 26 Arprt Elev 26
-----------------------	------------------	---

[USN]

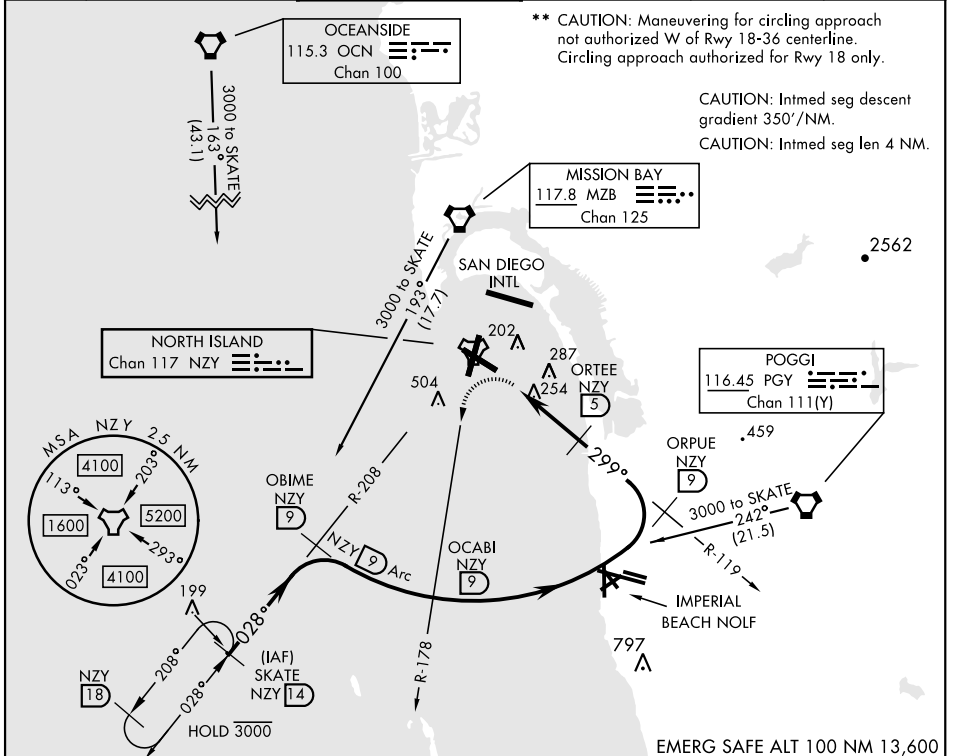
NORTH ISLAND NAS (HALSEY FIELD) (KNZY)

ALSF-1

 A1

MISSED APPROACH: Climbing left turn to 2000 via NZY TACAN R-178 to OCABI. Arc S on NZY 9 DME arc to OBIME, then via NZY R-208 to SKATE and hold.

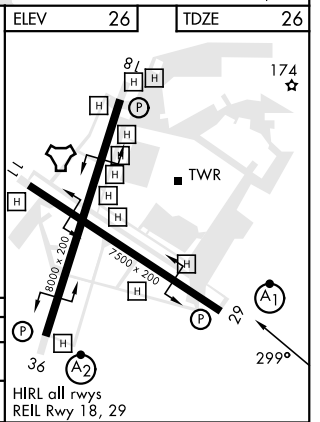
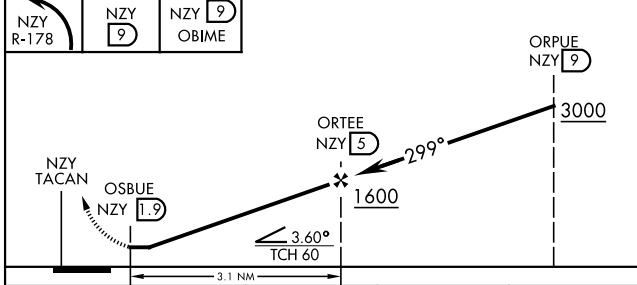
ATIS ★ 317.8	SOCAL APP CON 125.15 317.55	TOWER ★ 135.1 336.4	GND CON 118.0 360.675	CLNC DEL 128.4 288.25	PAR/ASR
-------------------------------	--	--------------------------------------	--	--	----------------



**** CAUTION:** Maneuvering for circling approach not authorized W of Rwy 18-36 centerline. Circling approach authorized for Rwy 18 only.

 CAUTION: Intmed seg descent gradient 350°/NM.
 CAUTION: Intmed seg len 4 NM.

EMERG SAFE ALT 100 NM 13,600



CATEGORY	A		B		C		D	
	S-29 *	540-¾	514	(600-¾)	540-1	514	(600-1)	
C CIRCLING**	620-1	594	(600-1)	NOT AUTHORIZED				

TACAN RWY 29

SW-3, 31 OCT 2024 to 28 NOV 2024

SW-3, 31 OCT 2024 to 28 NOV 2024