

# VOR/DME RWY 29

VORTAC PGY <b>116.45</b> Chan <b>111(Y)</b>	APCH CRS <b>279°</b>	Rwy ldg TDZE Arprt Elev <b>7500</b> <b>26</b> <b>26</b>
---	-------------------------	--

[USN]

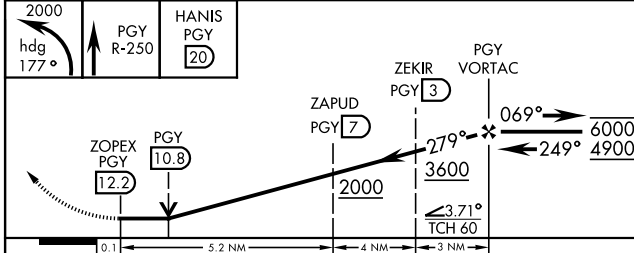
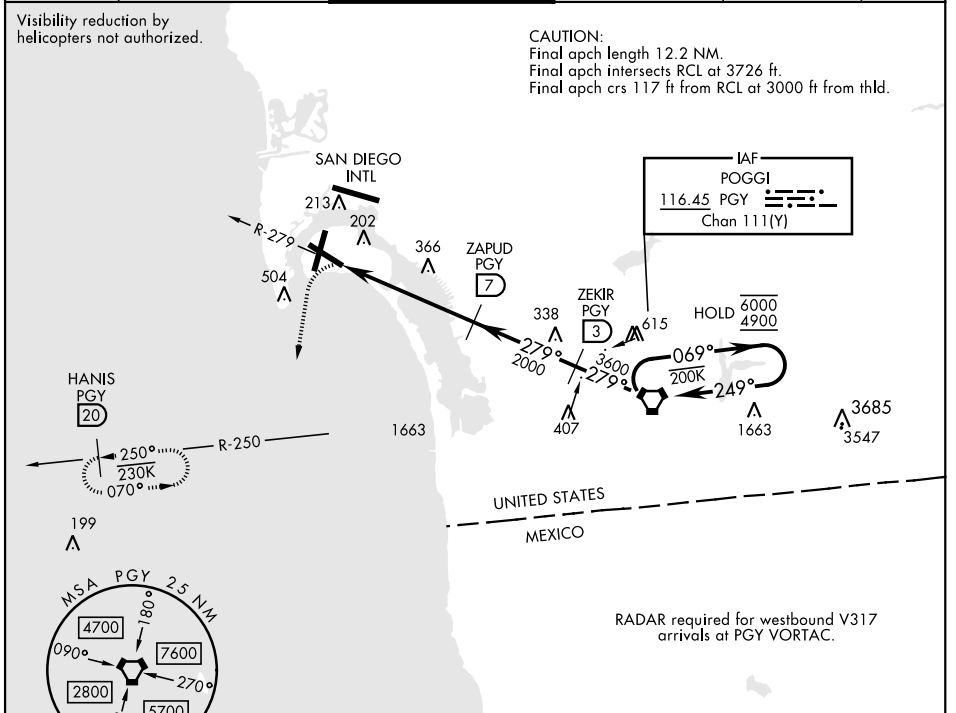
NORTH ISLAND NAS (HALSEY FIELD) (KNZY)

▼ \* When ALS inop, increase CAT AB vis to 1 mile, CAT CD vis to 1¾ miles.  
\*\* Circling not authorized W of Rwy 18-36. Circling authorized to Rwy 18 only.



MISSED APPROACH: Climbing left turn to 2000 via hdg 177° intercept PGY VORTAC R-250 to HANIS and hold.

ATIS ★ <b>317.8</b>	SOCAL APP CON <b>125.15 317.55</b>	TOWER ★ <b>135.1 336.4</b>	GND CON <b>118.0 360.675</b>	CLNC DEL <b>128.4 288.25</b>	PAR/ASR
------------------------	---------------------------------------	-------------------------------	---------------------------------	---------------------------------	---------



ELEV 26	TDZE 26															
<table border="1"> <tr> <td>CATEGORY</td> <td>A</td> <td>B</td> <td>C</td> <td>D</td> </tr> <tr> <td>S-29 *</td> <td>660-¾</td> <td>634 (700-¾)</td> <td>660-1¾</td> <td>634 (700-1¾)</td> </tr> <tr> <td>☑ CIRCLING **</td> <td>660-1</td> <td>634 (700-1)</td> <td colspan="2">NOT AUTHORIZED</td> </tr> </table>	CATEGORY	A	B	C	D	S-29 *	660-¾	634 (700-¾)	660-1¾	634 (700-1¾)	☑ CIRCLING **	660-1	634 (700-1)	NOT AUTHORIZED		<p>HIRL all rwys REIL Rwy 18, 29</p>
CATEGORY	A	B	C	D												
S-29 *	660-¾	634 (700-¾)	660-1¾	634 (700-1¾)												
☑ CIRCLING **	660-1	634 (700-1)	NOT AUTHORIZED													

# VOR/DME RWY 29

SW-3, 31 OCT 2024 to 28 NOV 2024

SW-3, 31 OCT 2024 to 28 NOV 2024