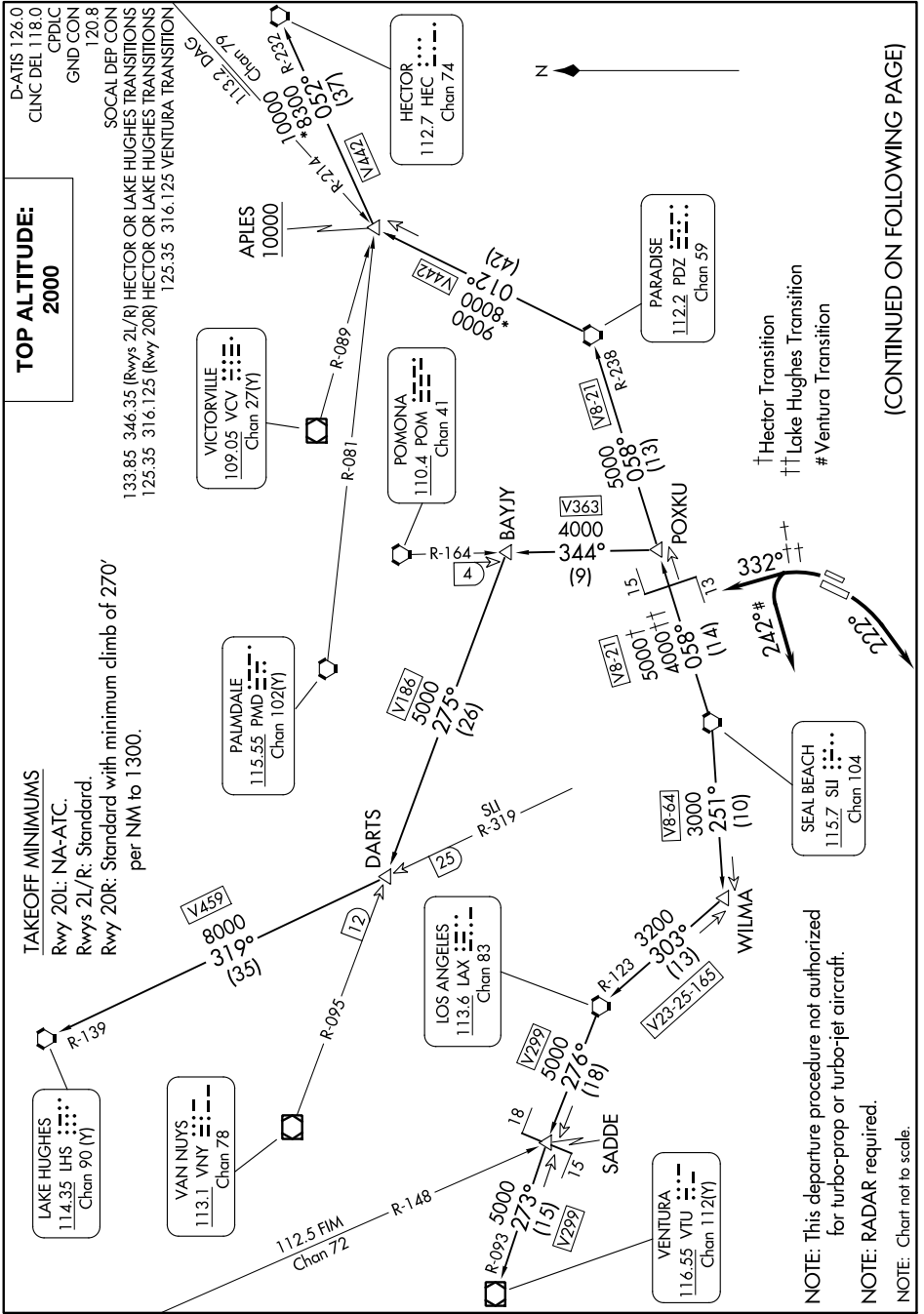


ANAHEIM ONE DEPARTURE

AL-377 (FAA)

JOHN WAYNE/ORANGE COUNTY (SNA)
SANTA ANA, CALIFORNIA

SW-3, 31 OCT 2024 to 28 NOV 2024



(CONTINUED ON FOLLOWING PAGE)

SW-3, 31 OCT 2024 to 28 NOV 2024

ANAHEIM ONE DEPARTURE

SANTA ANA, CALIFORNIA
JOHN WAYNE/ORANGE COUNTY (SNA)