

(FINZZ3.FINZZ) 22251

FINZZ THREE DEPARTURE (RNAV)

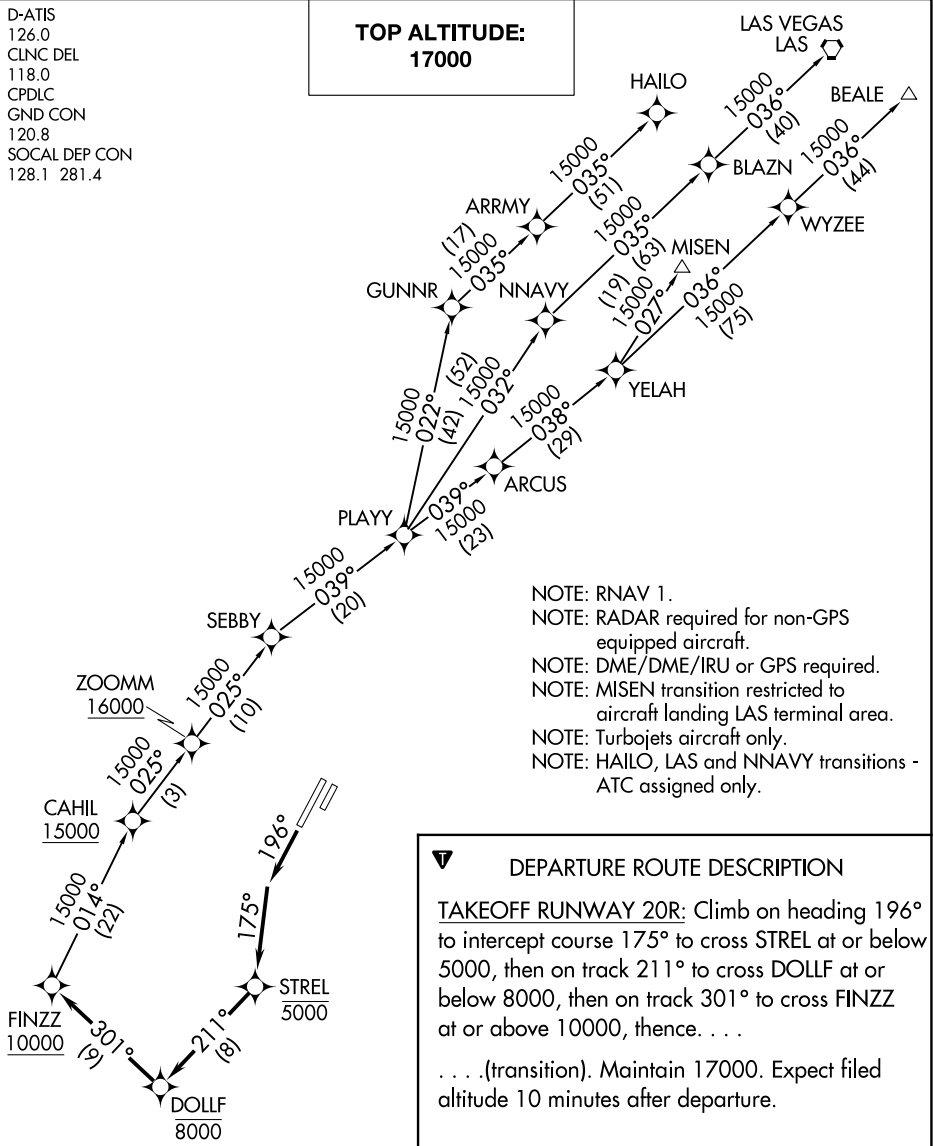
JOHN WAYNE/ORANGE COUNTY (SNA)

AL-377 (FAA)

SANTA ANA, CALIFORNIA

D-ATIS
126.0
CLNC DEL
118.0
CPDLC
GND CON
120.8
SOCAL DEP CON
128.1 281.4

**TOP ALTITUDE:
17000**



- NOTE: RNAV 1.
- NOTE: RADAR required for non-GPS equipped aircraft.
- NOTE: DME/DME/IRU or GPS required.
- NOTE: MISEN transition restricted to aircraft landing LAS terminal area.
- NOTE: Turbojets aircraft only.
- NOTE: HAILO, LAS and NNAVY transitions - ATC assigned only.

DEPARTURE ROUTE DESCRIPTION

TAKEOFF RUNWAY 20R: Climb on heading 196° to intercept course 175° to cross STREL at or below 5000, then on track 211° to cross DOLLF at or below 8000, then on track 301° to cross FINZZ at or above 10000, thence. . . .

. . . (transition). Maintain 17000. Expect filed altitude 10 minutes after departure.

BEALE TRANSITION (FINZZ3.BEALE)

HAILO TRANSITION (FINZZ3.HAILO)

LAS VEGAS TRANSITION (FINZZ3.LAS)

MISEN TRANSITION (FINZZ3.MISEN)

NNAVY TRANSITION (FINZZ3.NNAVY)

TAKEOFF MINIMUMS

Rwy 20R: Standard with a minimum climb of 320' per NM to 560.

NOTE: Chart not to scale.

FINZZ THREE DEPARTURE (RNAV)

(FINZZ3.FINZZ) 10SEP20

SANTA ANA, CALIFORNIA

JOHN WAYNE/ORANGE COUNTY (SNA)

SW-3, 31 OCT 2024 to 28 NOV 2024

SW-3, 31 OCT 2024 to 28 NOV 2024