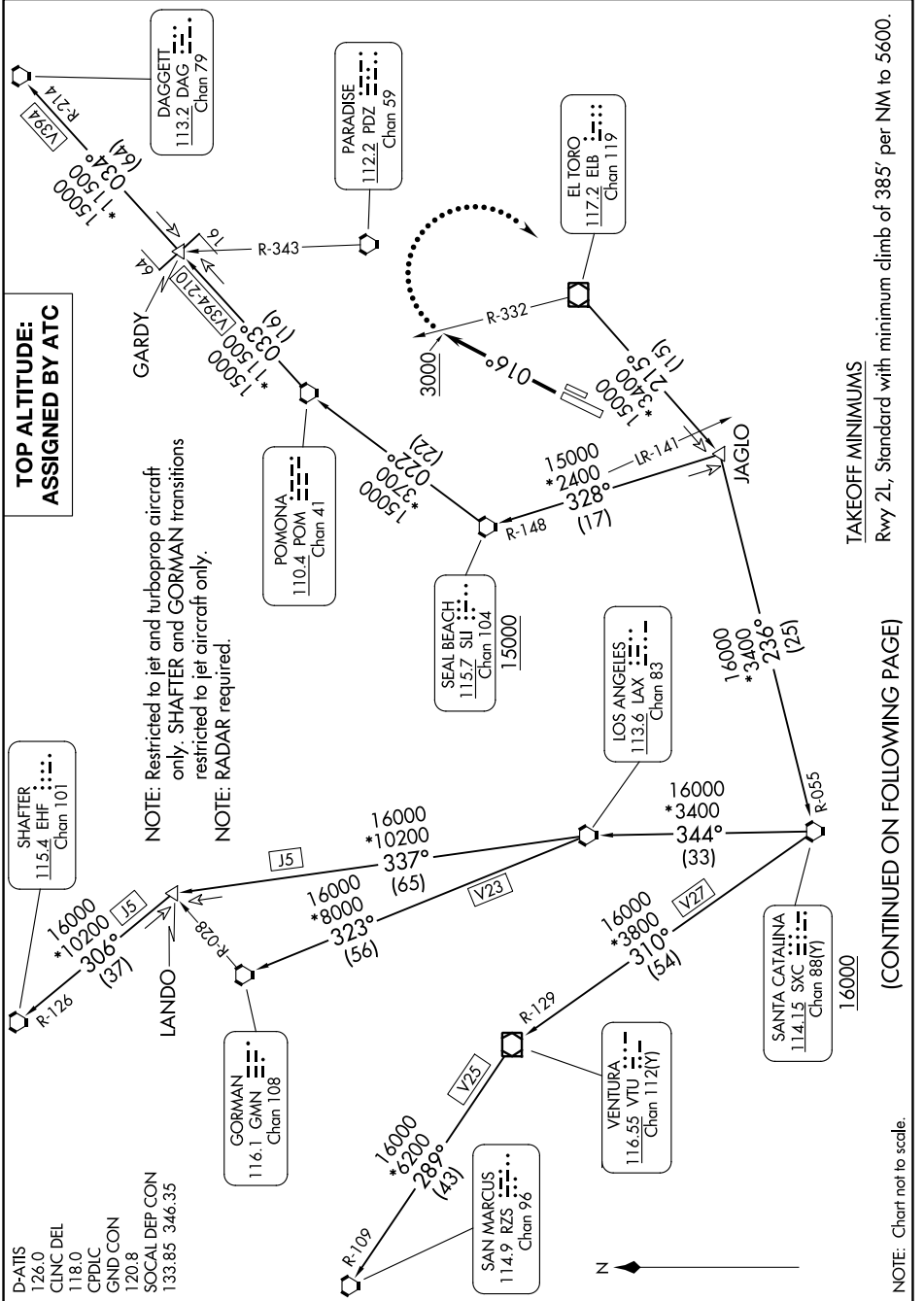


# IRVINE FIVE DEPARTURE

SW-3, 31 OCT 2024 to 28 NOV 2024



TAKEOFF MINIMUMS

Rwy 2L, Standard with minimum climb of 385' per NM to 5600.

(CONTINUED ON FOLLOWING PAGE)

SW-3, 31 OCT 2024 to 28 NOV 2024