

PIGGN THREE DEPARTURE (RNAV)

SW-3, 31 OCT 2024 to 28 NOV 2024

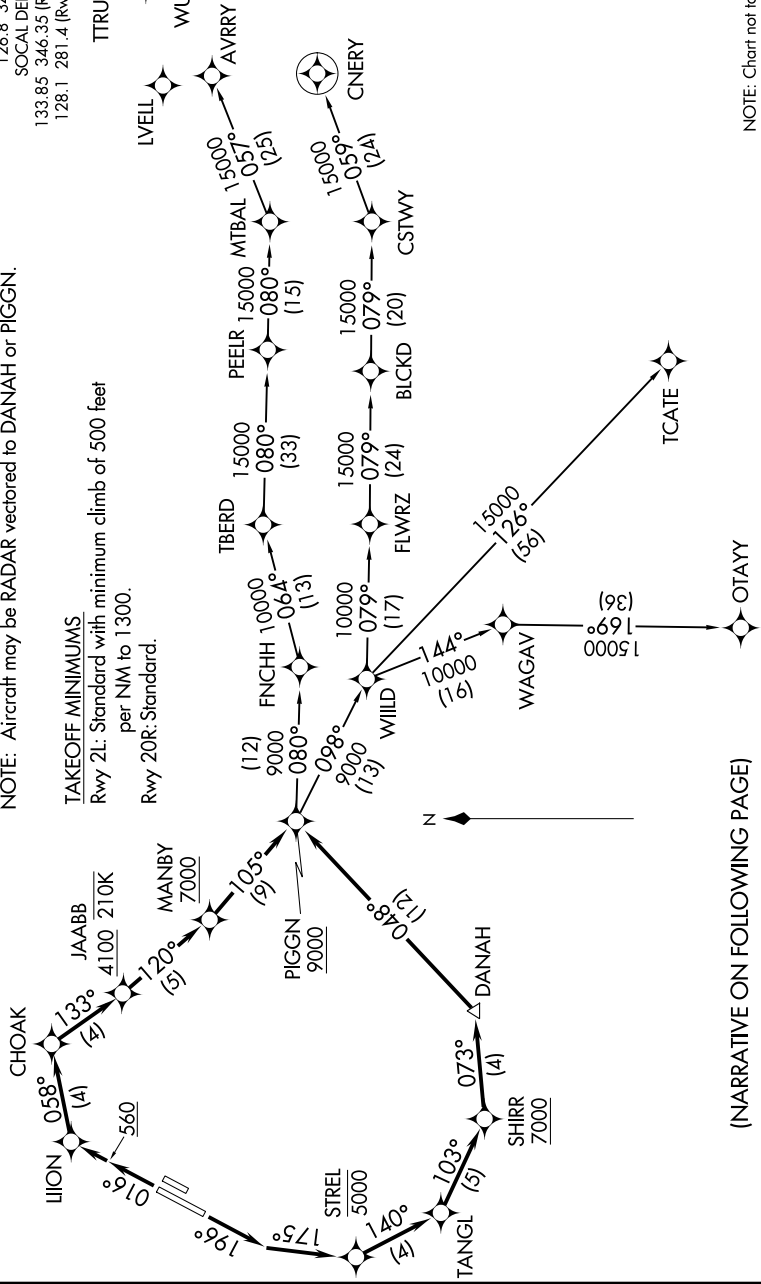
D-AITS 126.0
 CLNC DEL 118.0
 CPDIC
 GND CON 120.8
 JOHN WAYNE TOWER* 126.8 343 625
 SOCIAL DEP CON 133.85 346.35 (Rwy 2L)
 128.1 281.4 (Rwy 20R)

TTRUE
 LVELL
 WURMO
 AVRRY
 CNERY

NOTE: RADAR required.
 NOTE: RNAV-1.
 NOTE: DME/DME/IRU or GPS required.
 NOTE: Turboprop and turboprop only.
 NOTE: Parachute jumping all hours, 14000' and below, north of route between PIGGN and FNCHH.
 NOTE: Aircraft may be RADAR vectored to DANAH or PIGGN.

TAKEOFF MINIMUMS
 Rwy 2L: Standard with minimum climb of 500 feet per NM to 1300.
 Rwy 20R: Standard.

TOP ALTITUDE:
13000



(NARRATIVE ON FOLLOWING PAGE)

NOTE: Chart not to scale.

SW-3, 31 OCT 2024 to 28 NOV 2024