

APP CRS	Rwy Idg	<b>5700</b>
<b>016°</b>	TDZE	<b>56</b>
	Apt Elev	<b>56</b>

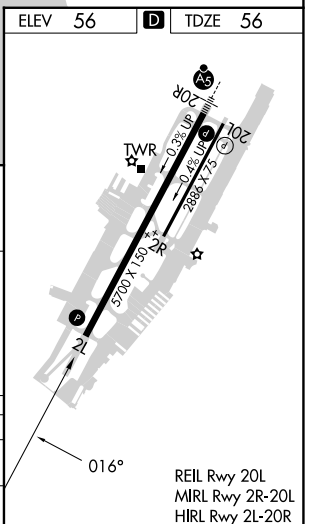
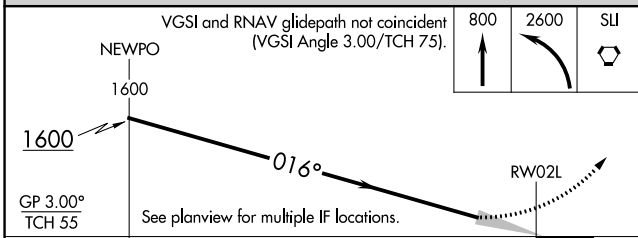
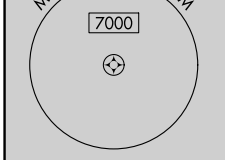
# RNAV (RNP) Z RWY 2L

JOHN WAYNE/ORANGE COUNTY (SNA)

For uncompensated Baro-VNAV systems, procedure NA below 5°C (41°F) or above 54°C (130°F). GPS required.

MISSED APPROACH: Climb to 800 then climbing left turn to 2600 direct SLI VORTAC and hold.

D-ATIS <b>126.0</b>	SOCAL APP CON <b>121.3 263.1</b>	JOHN WAYNE TOWER ★ <b>126.8 (CTAF) 0 343.625</b>	GND CON <b>120.8</b>	CLNC DEL <b>118.0</b>	CPDLC	UNICOM <b>122.95</b>
------------------------	-------------------------------------	---	-------------------------	--------------------------	-------	-------------------------



CATEGORY	A	B	C	D
RNP 0.30 DA	403-1 1/8 347 (400-1 1/8)			

**AUTHORIZATION REQUIRED**

SW-3, 31 OCT 2024 to 28 NOV 2024

SW-3, 31 OCT 2024 to 28 NOV 2024