

WAAS CH <b>97314</b> <b>W19A</b>	APP CRS <b>186°</b>	Rwy Idg TDZE <b>47</b> Apt Elev <b>50</b>	<b>7002</b>
--	------------------------	---	-------------

# RNAV (GPS) RWY 19

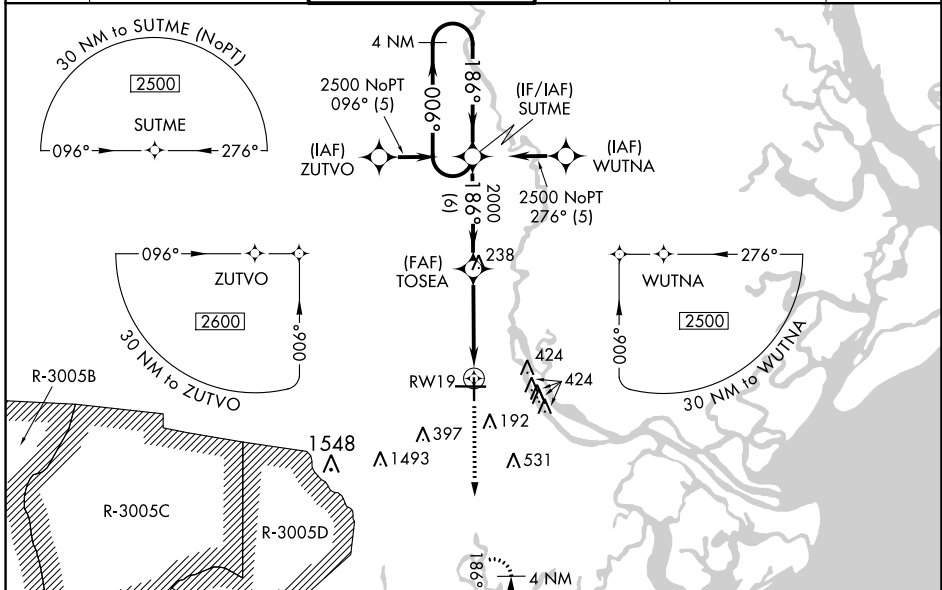
SAVANNAH/HILTON HEAD INTL (SAV)

RNP APCH-GPS.

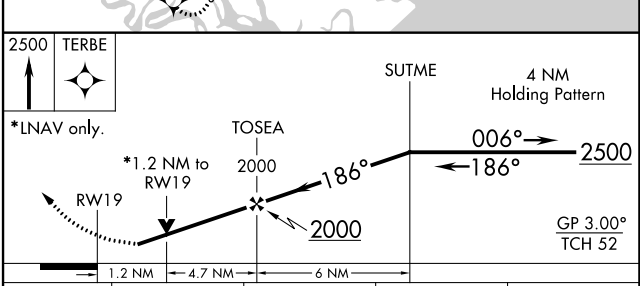
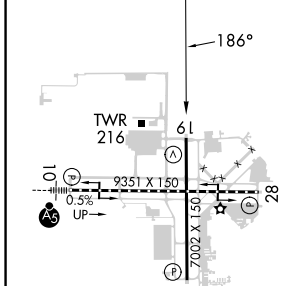
▼ For uncompensated Baro-VNAV systems, LNAV/VNAV NA below -15°C or above 54°C.  
 ▲ When local altimeter setting not received, use Hilton Head Island altimeter setting and increase LPV DA to 378 feet; increase LNAV/VNAV DA to 532 feet and all visibilities ¼ SM; increase all MDAs 80 feet and LNAV visibility Cat C/D ½ SM, and Circling visibility Cat C/D ¼ SM. VDP and Baro-VNAV NA when using Hilton Head Island altimeter setting.

MISSED APPROACH: Climb to 2500 direct TERBE and hold.

ATIS <b>123.75</b>	SAVANNAH APP CON * <b>125.3 371.875</b>	SAVANNAH TOWER * <b>125.975 (CTAF) 257.8</b>	GND CON <b>121.9 348.6</b>	CLNC DEL <b>119.55 291.775</b>	UNICOM <b>122.95</b>
-----------------------	--	---	-------------------------------	-----------------------------------	-------------------------



ELEV 50	<b>D</b>	TDZE 47
---------	----------	---------



CATEGORY	A	B	C	D
LPV DA	312-1		265 (300-1)	
LNAV/VNAV DA	466-1½		419 (500-1½)	
LNAV MDA	480-1	433 (500-1)	480-1¼ 433 (500-1¼)	480-1½ 433 (500-1½)
<b>C</b> CIRCLING	520-1	470 (500-1)	740-2 690 (700-2)	740-2¼ 690 (700-2¼)

TDZ/CL Rwy 10  
 REIL Rwy 19 and 28  
 HIRL Rwy 1-19 and 10-28

SE-4, 31 OCT 2024 to 28 NOV 2024

SE-4, 31 OCT 2024 to 28 NOV 2024